



## Knock Down Hardware - Table of Contents

9-28-01

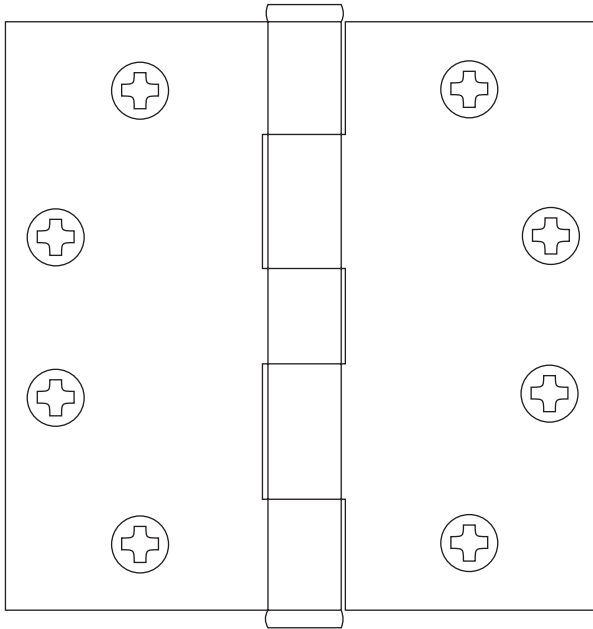
Full Mortise Plain Bearing Template Hinge	7.1
Full Mortise Plain Bearing Template Hinge (Pin Non Removable)	7.2
Full Mortise Ball Bearing Template Hinge	7.3
3200 Series Surface Mounted Door Closer	7.4
1605 Series Surface Mounted Door Closer	7.5
RA4451 Astragal for Double Swing Doors One Leaf Active	7.6
RA4441 Astragal for Double Swing Doors One Leaf Active	7.7
Yale 5300 Series Grade II Standard Duty Cylindrical Lockset	7.8
Yale 5400 Series Grade I Heavy-Duty Cylindrical Lockset	7.9
Yale Grade I Mortise Lock-Knob Heavy Duty	7.10
Yale Grade I Mortise Lock Heavy Duty	7.11
S V Series Standard Duty Cylindrical Locksets	7.12
Yale 5400L Series Grade I Heavy-Duty Cylindrical Lockset	7.13
5300L Series Standard Duty Cylindrical Locksets	7.14
PDQ SK Series Grade 2 Heavy-Duty Cylindrical Lockset	7.15
Anti-Panic Device/Rim Type/E Series	7.16
2923 Removable Mullion	7.17
Parker UL520 Series Low Profile Rim Exit Device	7.18
Low Profile Rim Type Anti-Panic Device	7.19
1708 Top & Bottom Surface Bolts For Double Doors	7.20
Surface Bolts for Inactive Leaves of Double Doors	7.21
Panic Type Threshold	7.22
Adjustable Cap Style Sweep	7.24
Reversible Door Frame Package Installation Guide	7.25



Full Mortise Plain Bearing Template Hinge

8-1-99

“NRP” suffix denotes non-removable pin feature.



STEEL with STEEL PIN

Five Knuckle

Non-Rising, Removable Pin

Button Tip and Plug

Furnished with Phillips,  
Flat Head Screws

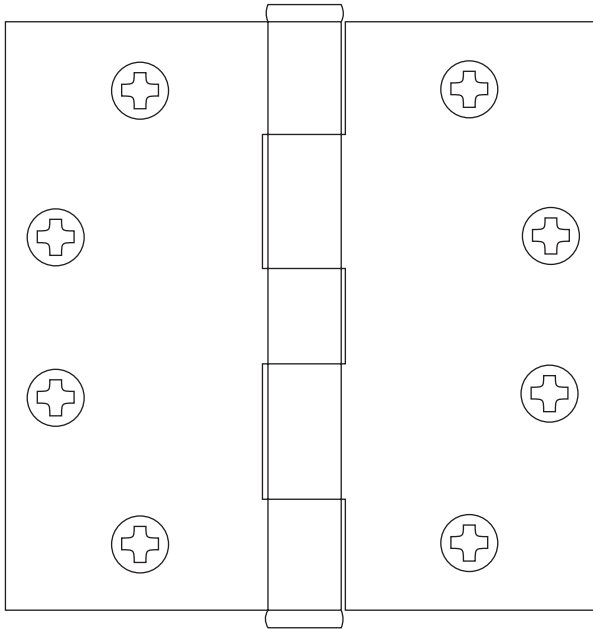
PRODUCT NO.	2110NRP26D/DNS
Size Open	4-1/2" x 4-1/2"
Gage of Metal	.134"
Number of Holes	(8)
Machine Screw Size	#12-24 x 1/2"
Base Material	Steel
FINISH	US26D

Conforms to ANSI A156.7 Template



Full Mortise Plain Bearing Template Hinge (NRP) 8-1-99

“NRP” suffix denotes non-removable pin feature.



STEEL with STEEL PIN

Five Knuckle

Non-Rising, Removable Pin

Button Tip and Plug

Furnished with Phillips,  
Flat Head Screws

Set screw makes pin  
non removable.

PRODUCT NO.	2110NRP26D/STANLEY
Size Open	4-1/2" x 4-1/2"
Gage of Metal	.134"
Number of Holes	(8)
Machine Screw Size	#12-24 x 1/2"
Base Material	Steel
FINISH	US26D

Conforms to ANSI A156.7 Template

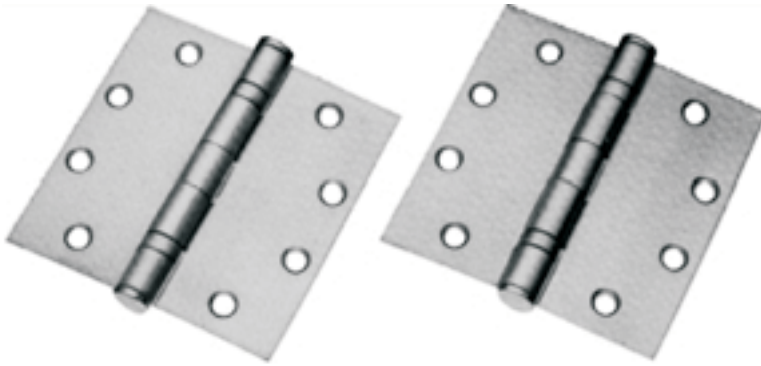


Full Mortise Template Hinges

8-1-99

**BALL BEARING - STANDARD WEIGHT**

4 1/2" x 4 1/2" Template



**GENERAL PRODUCT INFORMATION: PBB, Inc.**

Template hinges are manufactured to close tolerances and meet all specifications and requirements set by the American National Standards Institute (ANSI).

**HINGE SWAGING:** A standard swaging of our standard weight full mortise hinge when closed to parallel position provides a 1/16" clearance between leaves.

**MATERIAL GAUGE:**  
.134 ± .005 FOR 4 1/2 X 4 1/2

**STANDARD SCREW SIZE:**

FHMS-12 x 24 x 1/2

FHWS-12 x 1 1/4

**BB81** (ANSI A8112)

Steel - Polished and Plated or Bonderized and Prime Coated for Painting

All hinges are ANSI template.

**OTHER SPECIFICATIONS:**

Height of hinge:

4.50 + .000 FOR 4 1/2 x 4 1/2

- .015

Width:

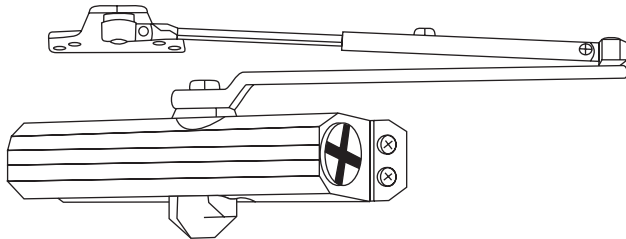
4.50 ± .015 for 4 1/2 x 4 1/2



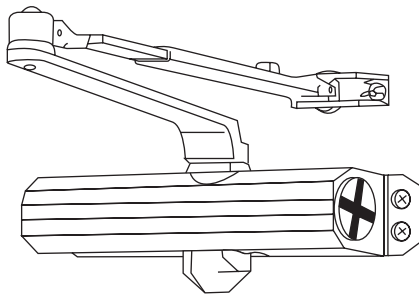
3200 Series Surface Mounted Door Closer

8-1-99

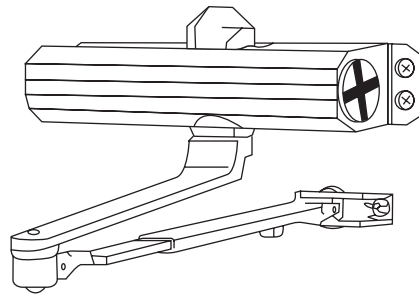
Conforms to Federal Specifications FF-H-121-c type 3009 and to Federal Specification FF-H-121D/BHMA 301/ANSI A156.4. Type CO3000. UL Listed.



PARALLEL ARM APPLICATION  
Closer mounted on door;  
bracket mounted on frame soffit.



REGULAR ARM APPLICATION  
Closer mounted on door;  
bracket mounted on frame face.

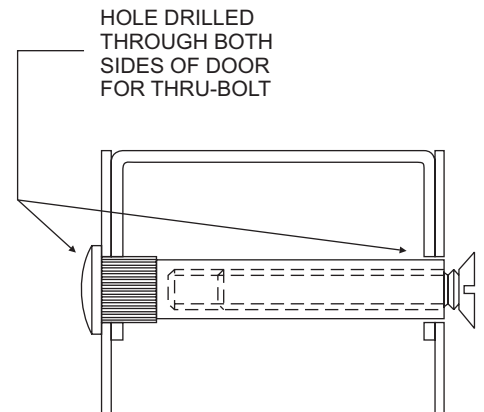


TOP JAMB APPLICATION  
Closer mounted on frame face;  
bracket mounted on door.

- COMPLETELY NON-HANDED EXCEPT FOR FUSIBLE LINK ARMS
- UNIVERSAL, REGULAR OR PARALLEL ARMS
- COMPACT SLIMLINE DESIGN
- LIGHTWEIGHT ALUMINUM SHELL
- RACK & PINION CONSTRUCTION
- 1/8" ALLEN TYPE REGULATING SCREW CONTROLS BOTH LATCH AND SWEEP SPEED

CLOSER SELECTION GUIDE	
CLOSER NUMBER	DOOR LEAF SIZE
3241	3070
3251	4070

The 3200 series closer offers compact, contemporary styling to harmonize with today's architectural settings. Full rack and pinion regulated spring closing power with hydraulic checking is your assurance of versatile door control and smooth operation. Allen key operated regulating valve controls both closing and latch speeds. Adjustable power shoe on regular arm closers affords a minimum power adjustment of 15%. Fully reversible (except fusible link) and with adaptors included for parallel arm and top jamb application, the 3200 series closers provide unmatched inventory versatility through application adaptability.



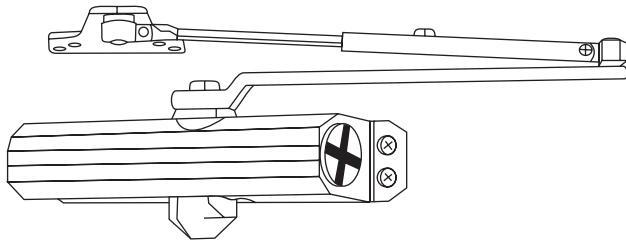
Thru-bolts and screws furnished in closer package.



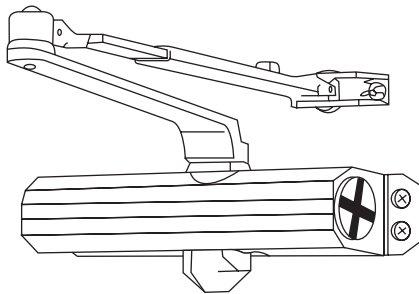
1605 Series Surface Mounted Door Closer

8-1-99

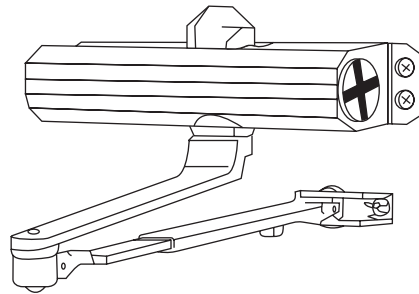
Conforms to Federal Specifications FF-H-121-c type 3009 and to Federal Specification FF-H-121D/BHMA 301/ANSI A156.4. Type CO3000. UL Listed.



PARALLEL ARM APPLICATION  
Closer mounted on door;  
bracket mounted on frame soffit.



REGULAR ARM APPLICATION  
Closer mounted on door;  
bracket mounted on frame face.



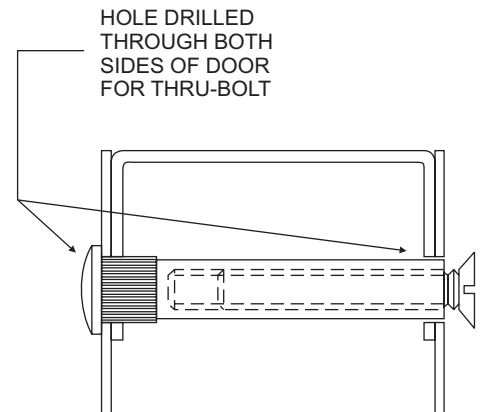
TOP JAMB APPLICATION  
Closer mounted on frame face;  
bracket mounted on door.

- COMPLETELY NON-HANDED EXCEPT FOR FUSIBLE LINK ARMS
- UNIVERSAL, REGULAR OR PARALLEL ARMS
- COMPACT SLIMLINE DESIGN
- LIGHTWEIGHT ALUMINUM SHELL
- RACK & PINION CONSTRUCTION
- 1/8" ALLEN TYPE REGULATING SCREW CONTROLS BOTH LATCH AND SWEEP SPEED

CLOSER SELECTION GUIDE	
CLOSER NUMBER	MAX DOOR LEAF SIZE
1605	4070

The 1605 series closer offers compact, contemporary styling to harmonize with today's architectural settings. Full rack and pinion regulated spring closing power with hydraulic checking is your assurance of versatile door control and smooth operation. Allen key operated regulating valve controls both closing and latch speeds. Adjustable power shoe on regular arm closers affords a minimum power adjustment of 15%. Fully reversible (except fusible link) and with adaptors included for parallel arm and top-jamb applications, the 1605 series closers provide unmatched inventory versatility through application adaptability.

FINISH: SPRAYED ALUMINUM LACQUER



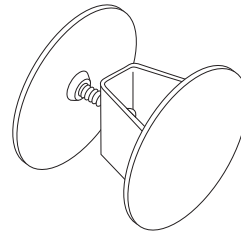
Thru-bolts and screws furnished in closer package.



RA4451 Astragal for Double Swing Doors, One Leaf Active

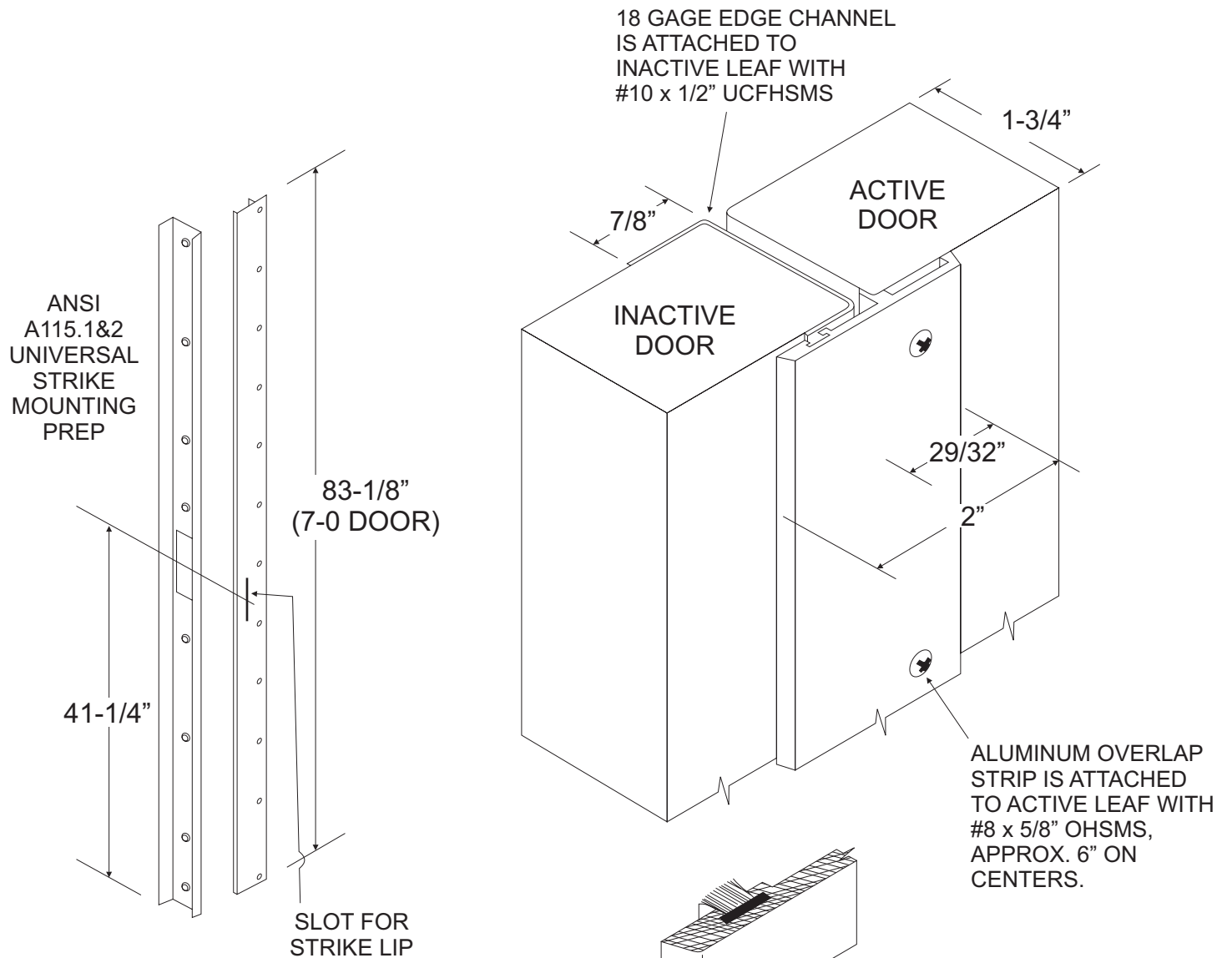
8-1-99

Furnish 4451 astragal to reduce the opening between doors. This reduction provides for proper deadlocking and protects the lock from tampering. The astragal also provides a degree of weather protection at the meeting stiles.



NO. 560/ Painted to match door.

Filler plates number 560 are used on the inactive leaf of double doors to cover cylindrical lock preparation.



FINISH: PC3 TRU WHITE or PC4 BRONZE

HANDED:  
USE LH ASTRAGAL FOR RH (LHR) ACTIVE LEAF (OPTIONAL)  
USE RH ASTRAGAL FOR LH (RHR) ACTIVE LEAF (STANDARD)

Normally furnished without pile weatherstrip. To have insert included, add letter "P" after product code, i.e., AR4451P.



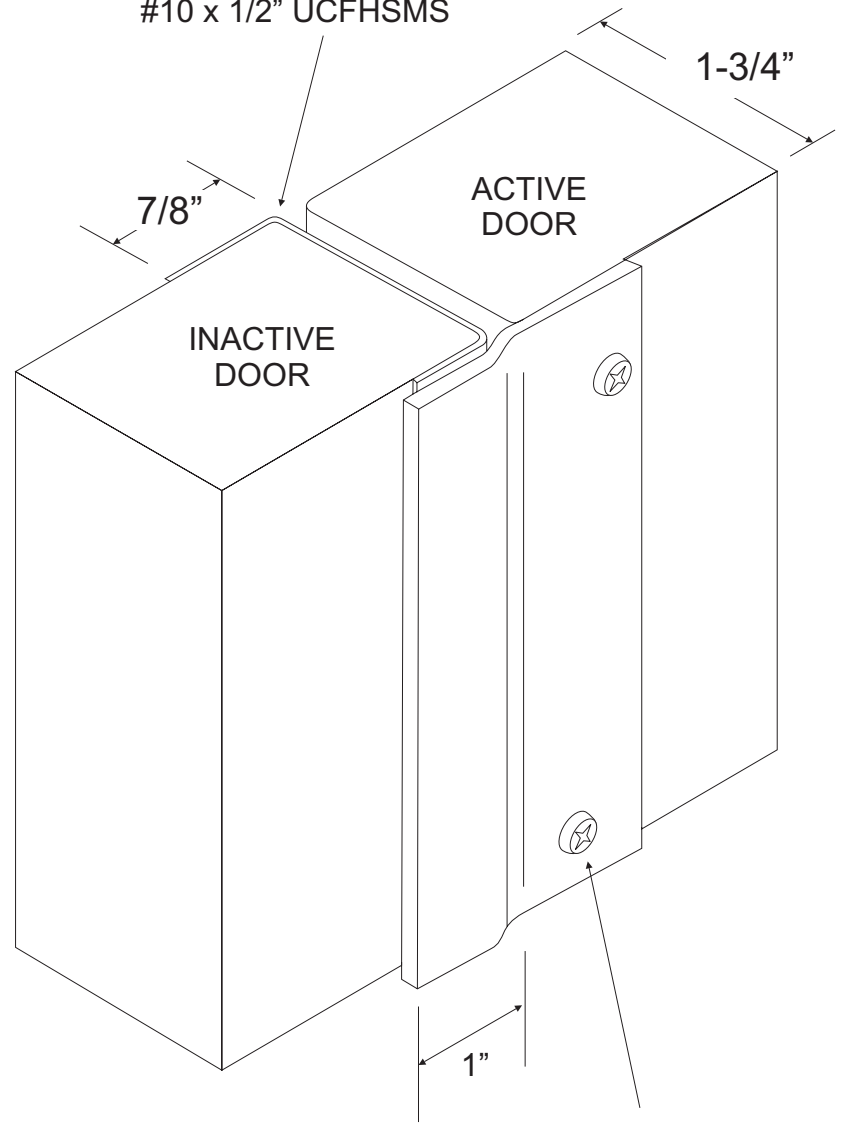
RA4441 Astragal for Double Swing Doors (One Leaf Active)

8-1-99

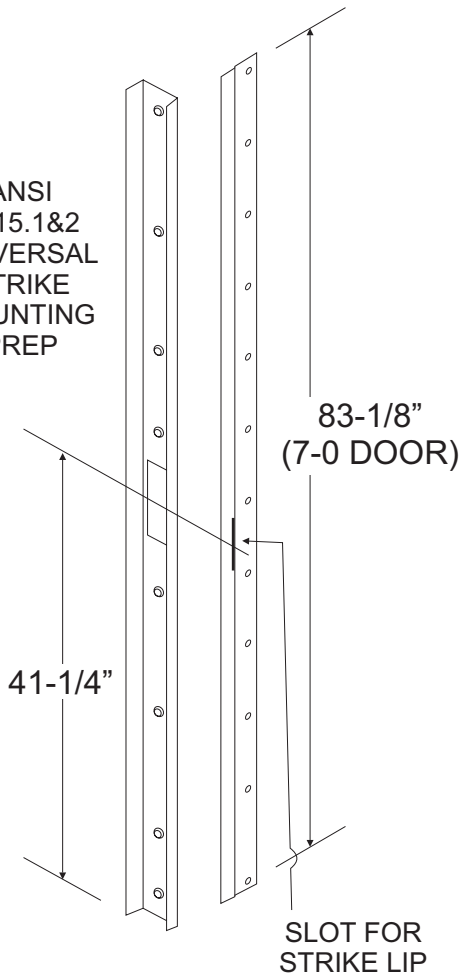
Furnish 4441 astragal to reduce the opening between doors. This reduction provides for proper deadlocking and protects the lock from tampering. The astragal also provides a degree of weather protection at the meeting stiles.

Use Blank Escutcheon to Cover Lock Preparation in Inactive Door Leaf.

18 GAGE EDGE CHANNEL IS ATTACHED TO INACTIVE LEAF WITH #10 x 1/2" UCFHSMS



ANSI A115.1&2 UNIVERSAL STRIKE MOUNTING PREP



12 GAGE OVERLAP STRIP IS ATTACHED TO ACTIVE LEAF WITH #8 x 1/2" PHSMS, APPROX. 6" ON CENTERS.

FINISH: BRONZE OR WHITE

HANDED:  
USE LH ASTRAGAL FOR RH (LHR) ACTIVE LEAF  
USE RH ASTRAGAL FOR LH (RHR) ACTIVE LEAF



Yale 5300 Series Grade II Standard Duty Cylindrical Lockset

8-1-99

Yale 5300 Series Locksets conform to ANSI Spec. A156.2 -- Series 4000, grade 2 and can be installed on doors prepared to ANSI Spec. A156.2 which covers Hollow Metal Door and Frame Preparation for Cylindrical Locksets.

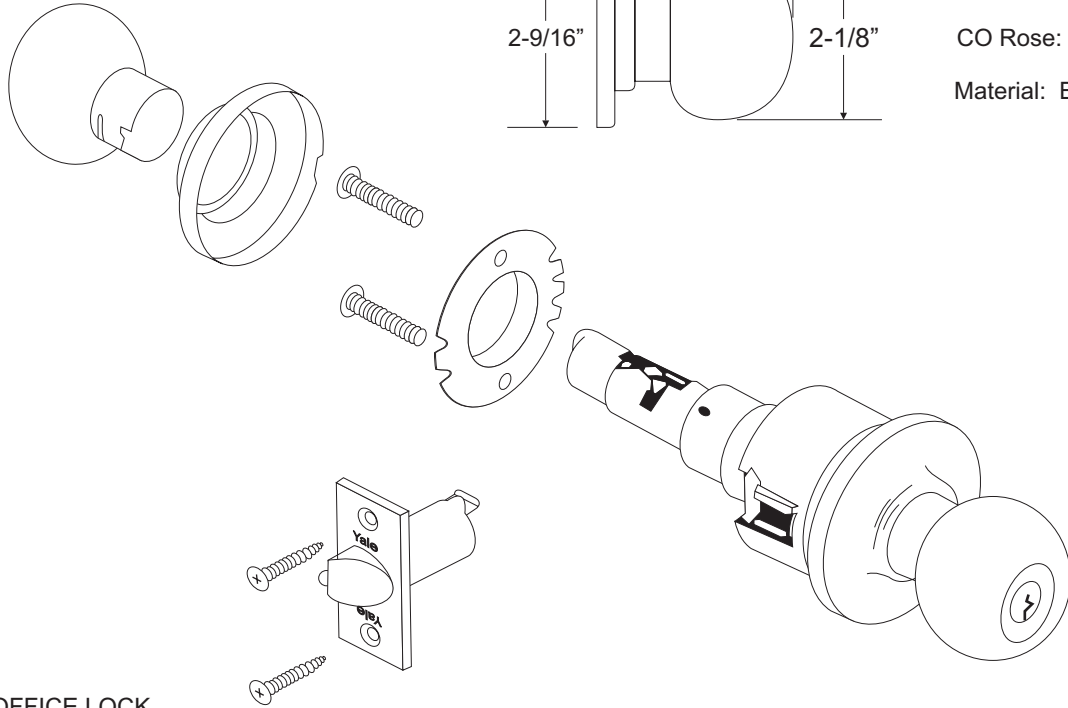
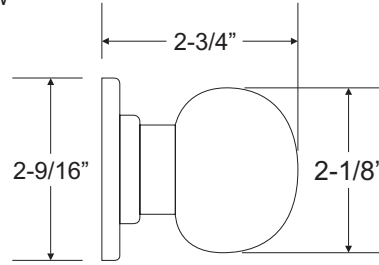
Yale 5300 Series Standard Duty Cylindrical Locksets conform to Federal Specification FF-H-00106b. (GSA-FSS) Type 160.

Carolina CA

CA Knob: Cold Forged

CO Rose: Cold Forged

Material: Brass, Bronze



5307  
ENTRANCE or OFFICE LOCK

For entrance, general home or office doors.

Deadlocking latchbolt.

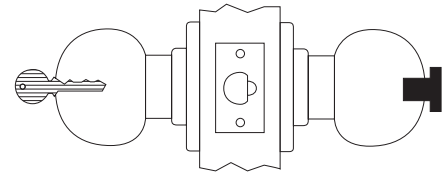
Either knob operates latchbolt. (Except when outside knob is locked from inside.)

Pushing turn button in inside knob locks outside knob (automatically releases when inside knob is turned or key is rotated in locked outside knob.)

Outside knob may be retained in locked position by pushing and rotating turn button 90° clockwise to a horizontal position; not released until turn button is manually returned to the vertical position.

Latchbolt operated by key in outside knob or by rotating inside knob.

Inside knob always active.



FF-H-00106b 160A/160B

ANSI F81/F82 Grade 2

SPECIFICATIONS:

Easy installation: The latchbolt requires either a 7/8" or 1" edge bore with a mortise for rectangular fronts; the lockset cylindrical case requires a 2-1/8" cross bore. All locksets are installed identically, regardless of their trim or function. Two connecting screws engage the lock case through the inside mounting plate for a secure installation.

LOCK CASE: 2-1/16" diameter. All functions furnished in one standard size lock case.

LATCHBOLT: Standard 1/2" throw, deadlocking or plain. All latchbolts are interchangeable.

FINISH: US26D.

REVERSIBILITY: For either right or left hand doors swinging in or out.

FRONT: Standard, flat rectangular 2-1/4" x 1-1/8"

STRIKE: Standard 4-7/8" ANSI A115.2

BACKSET: 2-3/4"



Yale 5400 Series Grade I Heavy-Duty Cylindrical Lockset

8-1-99

Yale 5400 Series Locksets conform to ANSI Spec. A156.2 -- Series 4000, grade 1 and can be installed on doors prepared to ANSI Spec. A156.2 which covers Hollow Metal Door and Frame Preparation for Cylindrical Locksets.

Yale 5400 Series Heavy-Duty Cylindrical Locksets conform to Federal Specification FF-H-00106b. (GSA-FSS) Type 161.

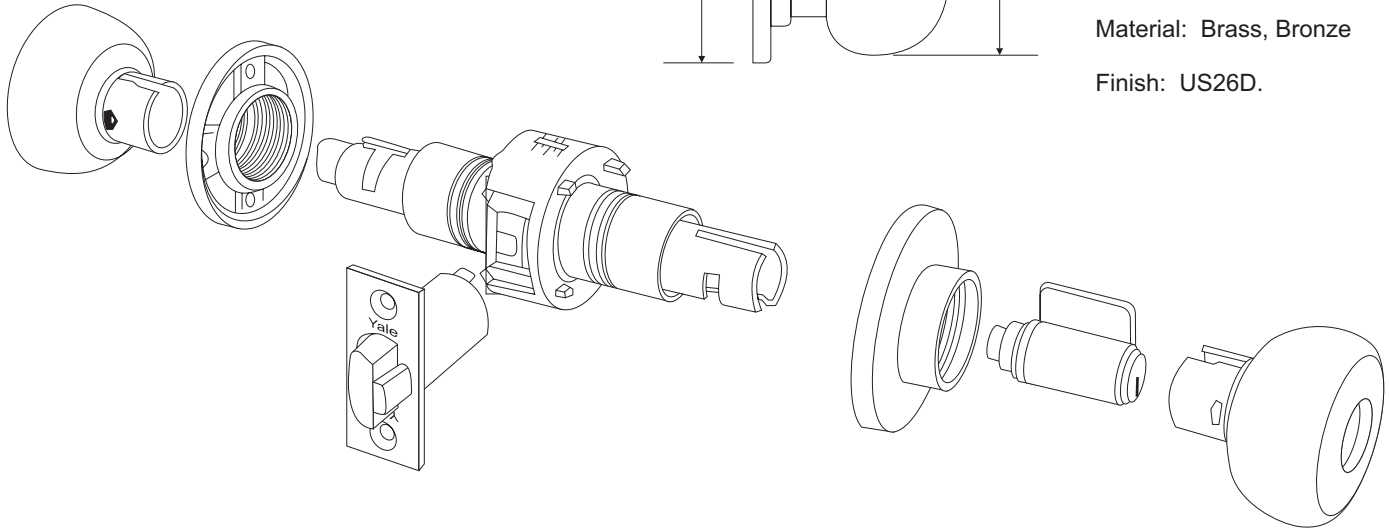
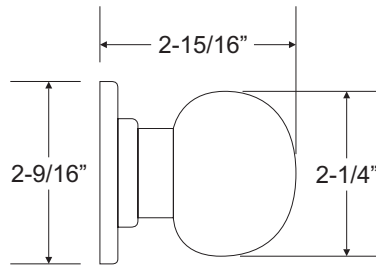
Carolina CA

CA Knob: Heavy Cold Forged, reinforced.

CO Rose: Heavy Cold Forged, reinforced.

Material: Brass, Bronze

Finish: US26D.



5407  
ENTRANCE, STOREROOM  
or CORRIDOR LOCK

For entrance, general home or office doors.

Deadlocking latchbolt.

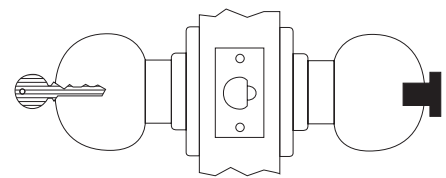
Either knob operates latchbolt. (Except when outside knob is locked from inside.)

Pushing turn button in inside knob locks outside knob (Automatically releases when inside knob is turned or key is rotated in locked outside knob.)

Outside knob may be retained in locked position by pushing and rotating turn button 90° clockwise to a horizontal position; not released until turn button is manually returned to the vertical position.

Latchbolt operated by key in outside knob or by rotating inside knob.

Inside knob always active.



FF-H-00106b 161A

ANSI F81/F82

Uniform installation regardless of function. Latch unit requires a 1" hole in door edge and mortise for rectangular front. The lockset requires a 2-1/8" hole through the door.

UL listed.

LOCK CASE: 2-1/16" diameter. All functions furnished in one standard size lock case.

LATCHBOLT: Standard 1/2" throw, deadlocking or plain. All latchbolts are interchangeable.

BACKSET: 2-3/4"

REVERSIBILITY: For either right or left hand doors swinging in or out.

FRONT: Standard, flat rectangular 2-1/4" x 1-1/8"

STRIKE: Standard 4-7/8" ANSI A115.2

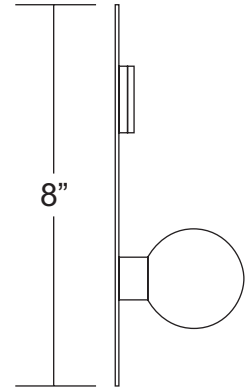
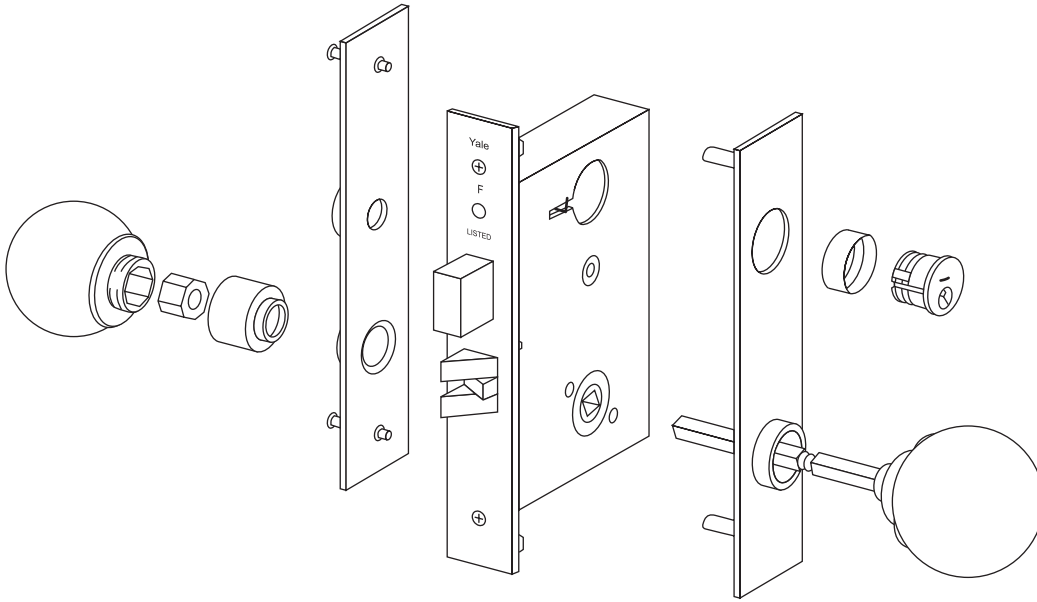
ALTERNATE



Yale Grade 1 Mortise Lock-Knob Heavy Duty

8-1-99

Yale 8700 Series mortise locks conform to ANSI A156.13, Series 1000, Grade 1, to ANSI A115.1 (hollow metal door & frame preparation for mortise locks), and to Fed Spec. FF-H-106C/GEN and FF-H-106/2.



Carolina / COE

CO Knob: Cold Forged  
WG Escutcheon: 8" x 2"  
heavy cold forged  
Cylinder Ring: Standard,  
No. 1134  
Material: Brass, Bronze

**REVERSIBLE:** The locks in this series have uniform front and strike.  
Case: heavy gage black lacquered steel, 6" x 4" x 15/16".

**FRONT:** Heavy gage steel, 8" x 1-1/4" x 3/16".  
Adjustable from flat to 1/8" in 2" bevel.

**ARMORED FRONT:** Wrought brass or bronze scalp, attached by machine screws to front. Finished to match trim.

**LATCH BOLT:** Brass antifriction 5/8" x 1"  
3/4" throw.

**DEAD BOLT:** Forged brass, 9/16" x 1-1/4".  
1" throw with two hardened steel inserts.

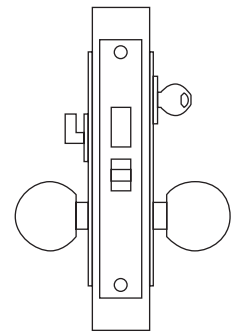
**BACKSET:** 2-3/4".

**STRIKE:** Wrought brass or bronze, 4-7/8" x 1-1/4" x 1/8".  
Finished to match trim. Lip: 1-1/8" to center, regular.

**FINISH:** US26D

**UL-LISTED:** All locks are UL listed for 3 hours.  
UL label stamped on front. UL sticker on case.

**HANDING:** All locks are furnished LHR.  
Must be field handed for other handing



8722  
ANSI F13

APARTMENT AND  
DORMITORY LOCK

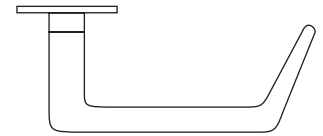
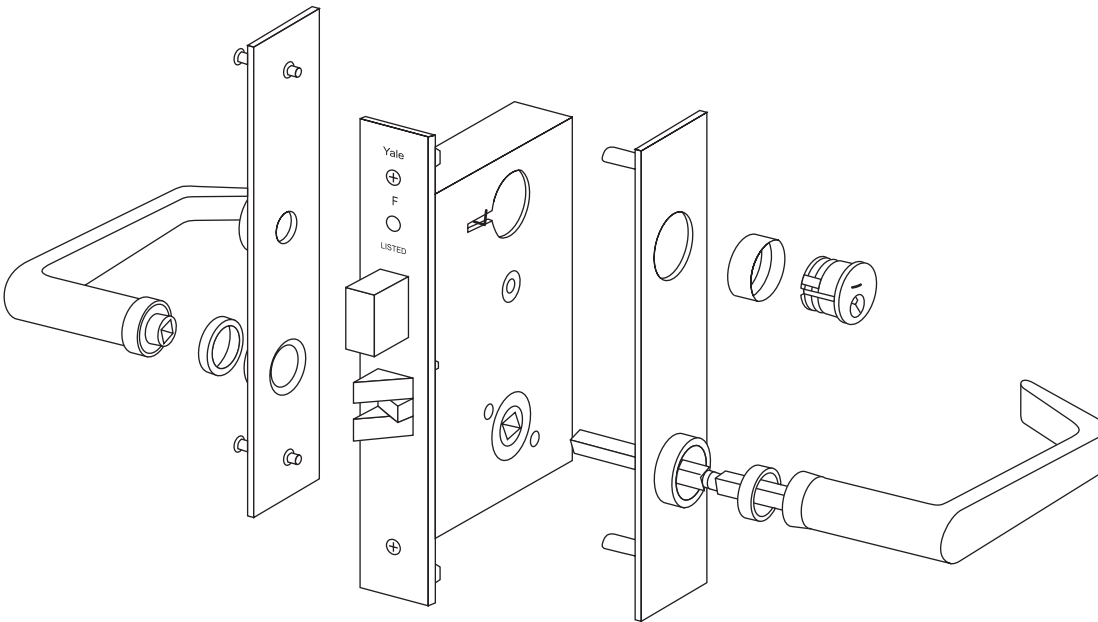
- Latch bolt by knob either side.
- Dead bolt by key outside and turnpiece inside.
- When dead bolt is projected, Latch bolt is deadlocked and Outside knob is locked.
- A turn of inside knob retracts latch and dead bolt simultaneously, automatically unlocking outside knob.



Yale Grade 1 Mortise Lock Knob Heavy Duty

8-1-99

Yale 8700 Series mortise locks conform to ANSI A156.13, Series 1000, Grade 1, to ANSI A115.1 (hollow metal door & frame preparation for mortise locks), and to Fed Spec. FF-H-106C/GEN and FF-H-106/2.



Augusta / AUE  
AU Lever Handle  
CO Escutcheon: 8" x 2"  
Cylinder Ring: Standard, No. 1765  
Material: Brass, Bronze

**REVERSIBLE:** The locks in this series have uniform front and strike.  
Case: heavy gage black lacquered steel, 6" x 4" x 15/16".

**FRONT:** Heavy gage steel, 8" x 1-1/4" x 3/16".  
Adjustable from flat to 1/8" in 2" bevel.

**ARMORED FRONT:** Wrought brass or bronze scalp, attached by machine screws to front. Finished to match trim.

**LATCH BOLT:** Brass antifriction 5/8" x 1" 3/4" throw.

**DEAD BOLT:** Forged brass, 9/16" x 1-1/4".  
1" throw with two hardened steel inserts.

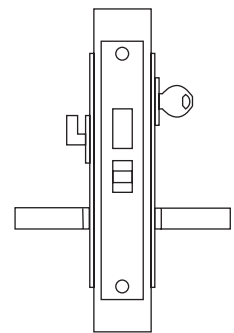
**BACKSET:** 2-3/4".

**STRIKE:** Wrought brass or bronze, 4-7/8" x 1-1/4" x 1/8".  
Finished to match trim. Lip: 1-1/8" to center, regular.

**FINISH:** US26D

**UL-LISTED:** All locks are UL listed for 3 hours.  
UL label stamped on front. UL sticker on case.

**HANDING:** All locks are furnished LHR.  
Must be field handed for other handing



8722FL  
ANSI F13

APARTMENT AND  
DORMITORY LOCK

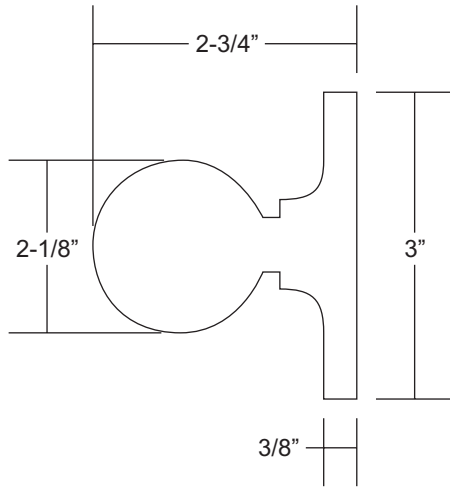
- Latch bolt by knob either side.
- Dead bolt by key outside and turnpiece inside.
- When dead bolt is projected, Latch bolt is deadlocked and Outside knob is locked.
- A turn of inside knob retracts latch and dead bolt simultaneously, automatically unlocking outside knob.



SV Series Standard Duty Cylindrical Locksets

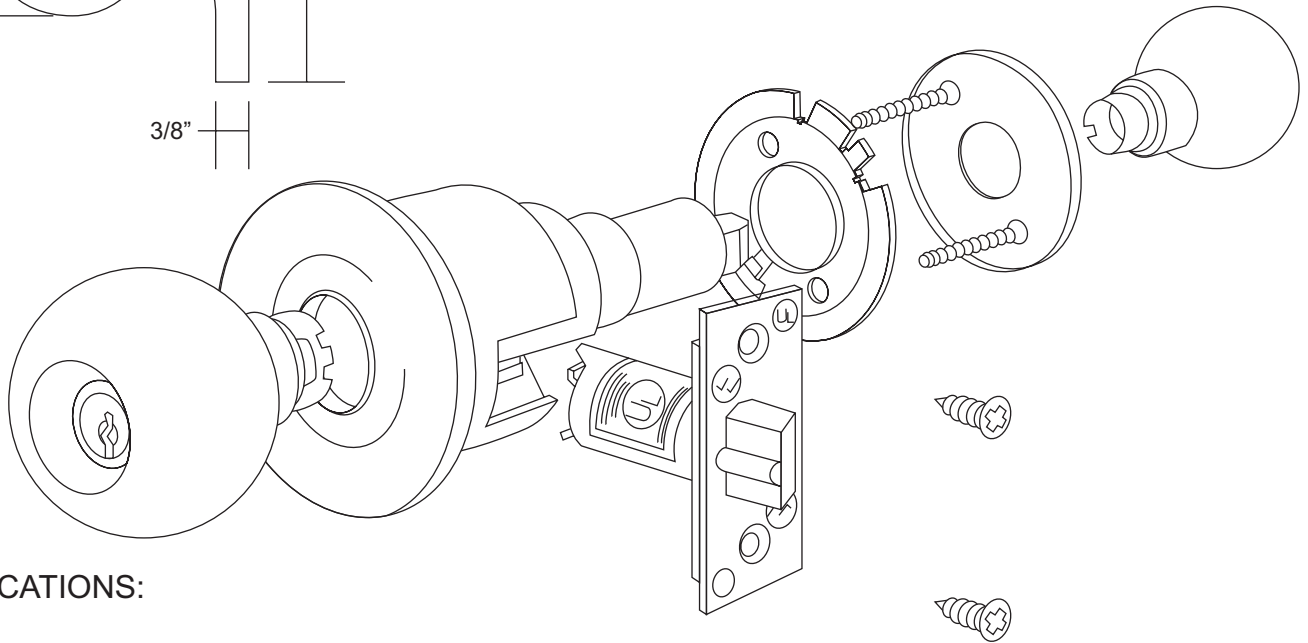
8-1-99

CERTIFICATIONS: Complies with ANSI A156.2, Series 4000, Grade 2.



CQ Knob and Rose

Zamak - zinc base material, plated to match finish symbol.



SPECIFICATIONS:

DOOR THICKNESS: 1-3/4" and 1-3/8"

BACKSET: 2-3/4"

CASE: Corrosion treated, heavy gage cold rolled steel mechanism.

FRONT: 2-1/4" x 1-1/8"

STRIKE: Wrought brass or bronze, stainless steel on special order. ANSI universal, 1-1/4" x 4-7/8" x 3/32".

LATCHBOLT: Solid brass, 1/2" throw, guarded, adjustable for beveled doors.

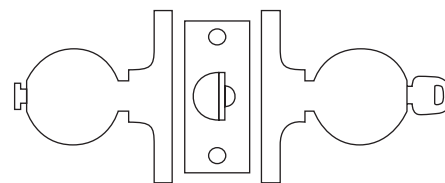
HAND: Reversible.

KEYS: Two per lock.

CYLINDER: 6 pin tumbler, (5 pins supplied). K.D. ...Can be master keyed

FINISHES: US26D

FIRE RATINGS: U.L. Listed, 3 hour (A label), single swing, 40 x 80 max leaf size.



SV116: F81-2, 160A ...Entrance

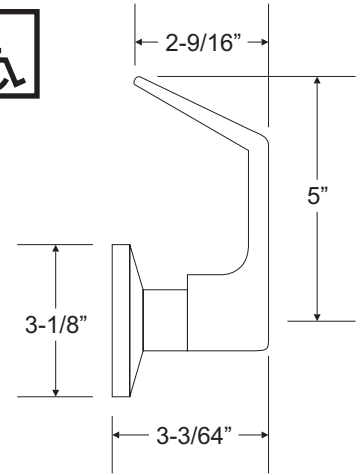
By both knobs. Outside knob locked or unlocked by turn/push button. Pushing and turning knob locks outside knob requiring use of key until button is manually unlocked. Pushing button only locks outside knob until unlocked with key or inside knob is turned.



Yale 5400L Series Grade I Heavy-Duty Cylindrical Lockset

8-1-99

CERTIFICATIONS: Complies with ANSI A156.2, Series 4000, Grade 2.



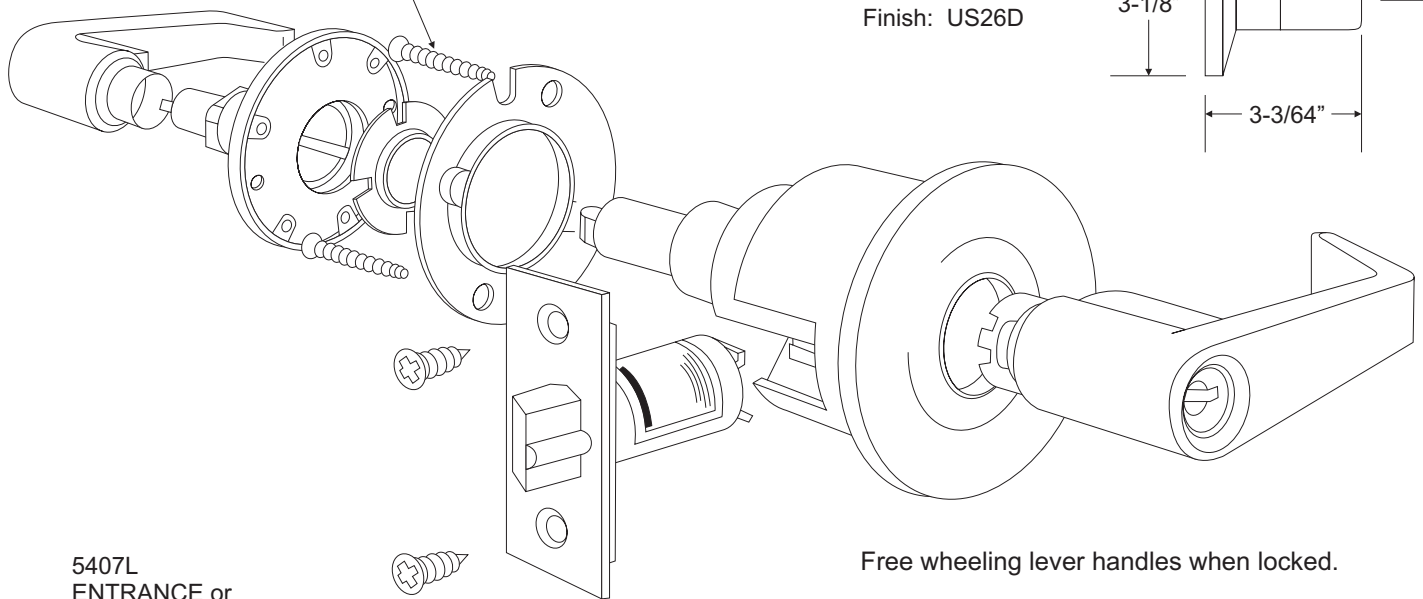
Augusta AU

Lever: Cast

AU Rose: Cold Forged

Finish: US26D

Thru Bolts Required for Wood Doors



5407L  
ENTRANCE or  
CORRIDOR LOCK

Free wheeling lever handles when locked.

For entrance, general home or office doors.

Deadlocking latchbolt.

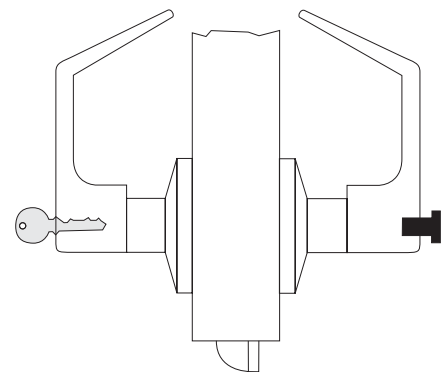
Either lever operates latchbolt (except when outside lever is locked from inside).

Pushing turn button in inside lever locks outside lever (automatically releases when inside lever is turned or key is rotated in locked outside lever).

Outside lever may be retained in locked position by pushing and rotating turn button 90° clockwise to a horizontal position; not released until turn button is manually returned to the vertical position.

Latchbolt operated by key in outside lever or by rotating inside lever.

Inside lever always free.



ANSI F81/F82

Uniform installation regardless of function. Latch unit requires a 1" hole in door edge and mortise for rectangular front. The lockset requires a 2-1/8" hole through the door.

UL Listed.

Meets ANSI Torque Test for levers.

LOCK CASE: 2-1/16" diameter. All functions furnished in one standard size lock case.

LATCHBOLT: Standard 1/2" throw, deadlocking or plain. All latchbolts are interchangeable.

BACKSET: 2-3/4"

REVERSIBILITY: For either right or left hand doors swinging in or out.

FRONT: Standard, flat rectangular 2-1/4" x 1-1/8"

STRIKE: Standard 4-7/8" ANSI A115.2



5300L Series Standard Duty Cylindrical Locksets

8-1-99

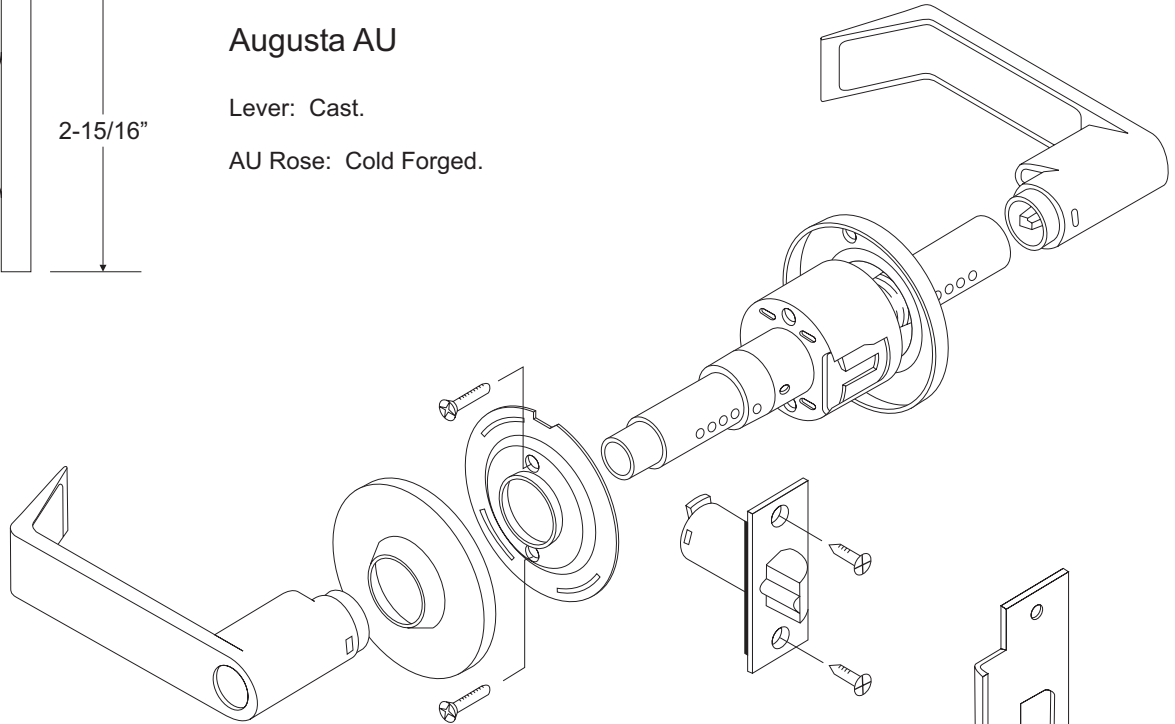
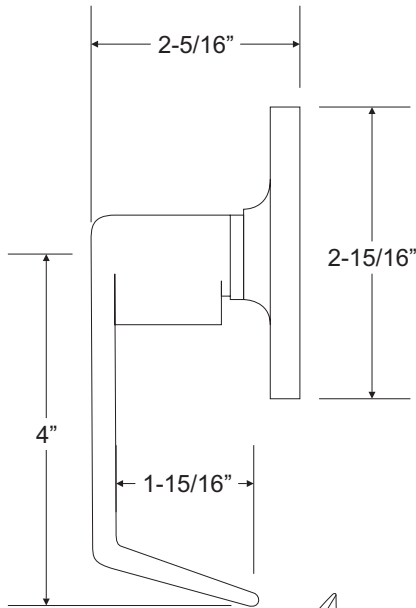
CERTIFICATIONS: Complies with ANSI A156.2, Series 4000, Grade 2, A115.2, A117.1, and UFAS.



Augusta AU

Lever: Cast.

AU Rose: Cold Forged.



SPECIFICATIONS:

DOOR THICKNESS: 1-3/4" and 1-3/8"

BACKSET: 2-3/4"

CASE: Heavy gage cold rolled steel mechanism, zinc plated and dichromated.

FRONT: 2-1/4" x 1-1/8"

STRIKE: Wrought brass or bronze, stainless steel on special order. ANSI universal, 1-1/4" x 4-7/8" x 3/32".

LATCHBOLT: stainless steel, 1/2" throw, adjustable for beveled doors; deadlocking.

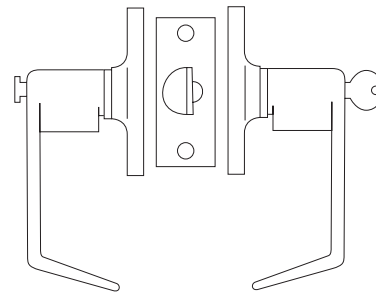
HAND: Reversible.

KEYS: Two per lock.

CYLINDER: 6 pin tumbler, (5 pins supplied). K.D. ...can be master keyed.

FINISHES: US26D

FIRE RATINGS: U.L. listed, 3 hour (A label), single swing, 40 x 80 max leaf size.



5300L: F81-2, 160A ...Entrance

Either lever operates latchbolt (except when outside lever is locked from inside.). Pushing turn button on inside lever locks outside lever. (Automatically released when inside lever is turned or key is rotated in locked outside lever.) Outside lever may be retained in locked position by pushing and rotating turn button 90° clockwise to a horizontal position; not released until turn button is manually returned to the vertical position. Latchbolt is operated by key in outside lever or by rotating inside lever. Inside lever always active.



PDQ SK Series Grade 2 Heavy-Duty Cylindrical Lockset

8-1-99

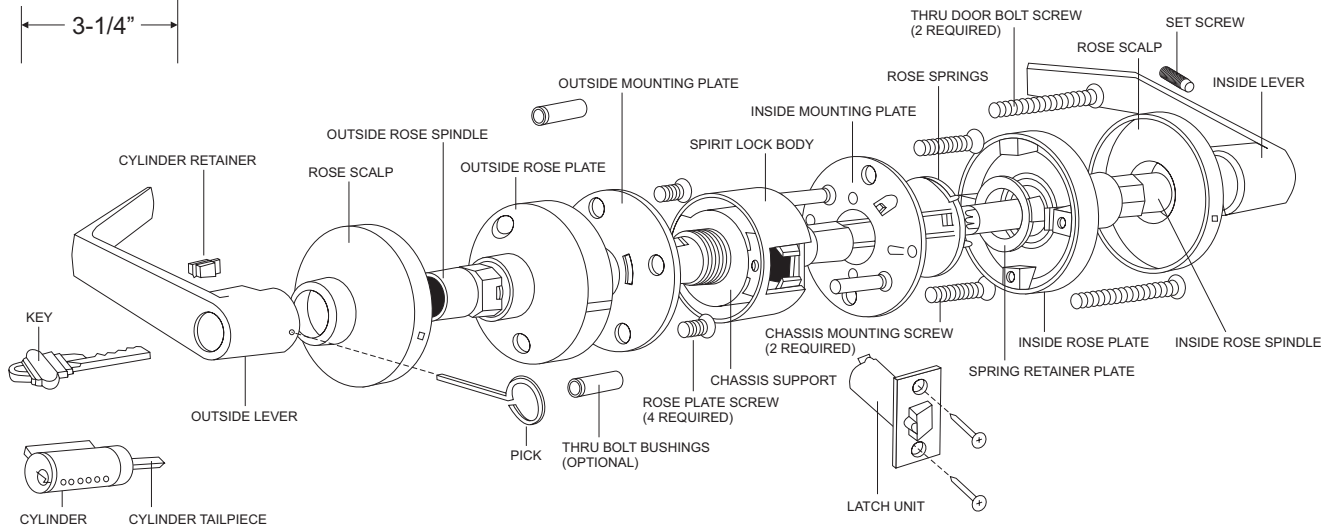
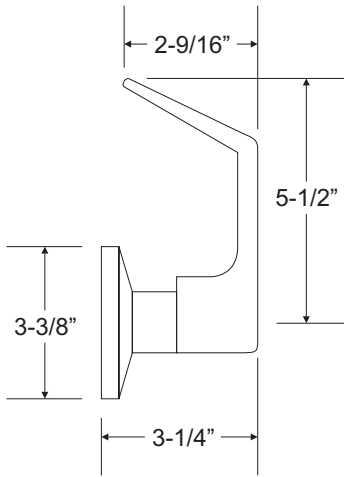


CERTIFICATIONS: Complies with ANSI A156.2, Series 4000, Grade 2.

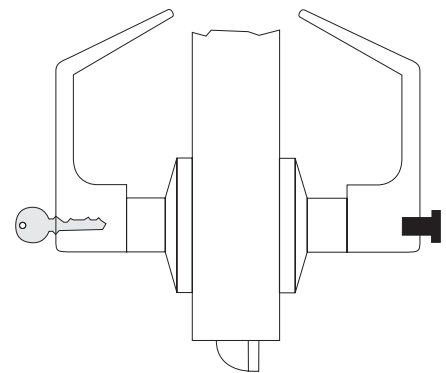
Philadelphia - SK-PHL

Lever: Cast

Finish: US26D



Free wheeling lever handles when locked.



SK116  
Entrance  
ANSI F81

By both levers. Outside lever locked or unlocked by turn/push button. Pushing and turning button locks outside lever requiring use of key until button is manually unlocked. Pushing button only locks outside lever until unlocked with key or inside lever is turned.

Uniform installation, standard 161 door preparation.  
UL Listed.

LOCK CASE: Heavy gage cold rolled steel mechanism, dichromated for corrosion resistance.

LATCHBOLT: Standard 1/2" throw, deadlocking or plain. All latchbolts are interchangeable.

BACKSET: 2-3/4"

FRONT: Standard, adjustable rectangular 2-1/4" x 1-1/8"

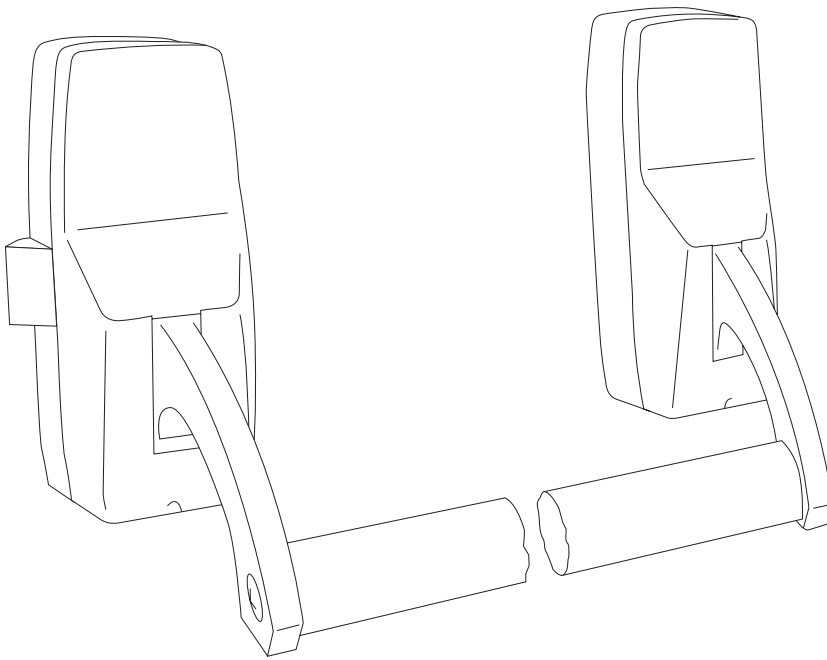
REVERSIBILITY: For either right or left hand doors swinging in or out.

STRIKE: Standard 4-7/8"  
ANSI A115.2

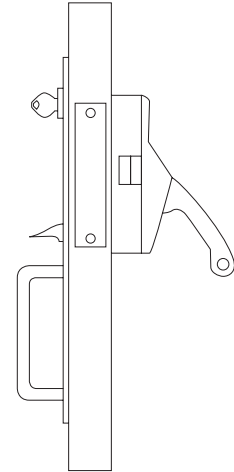


Anti-Panic Device/Rim Type/E Series

8-1-99



HEAVY-DUTY RIM TYPE



STANDARD STRIKE

SPECIAL STRIKE



No. 7374



No. 4373

Strike No. 4373 furnished only when ordered. Strike for rim devices when used on pairs of doors with astragal and surface bolt.

E53 ENTRANCE and EXIT

- Outside by key or thumb piece.
- Key disengages thumb piece.\*

\* When door is locked, thumb piece is free acting and disengaged.

SPECIFICATIONS

**INSIDE OPERATION:** A slight pressure on the cross bar will instantly release the door to allow immediate exit.

**DROP FORGED LEVER ARMS:** Provides maximum strength at point of severest stress.

**NYLON BEARINGS:** Provided in lever arms to reduce wear on the 1/2" axle.

**DOGGING DEVICES:** Provided in both cases to lock cross bars in depressed position, holding latch bolt retracted; with stainless steel helicoil insert in cases to prevent wear and corrosion and to overcome loosening of locking screw.

**CROSS BARS:** Furnished in 31-3/4" lengths to be cut to size in the field.

**ANSI/BHMA:** Complies with ANSI/BHMA A156.3-1984, TYPE 1

**UL LISTED:** Casualty requirements for safety. Marked "WL"

**DIMENSIONS OF INSIDE TRIM:** Heavy wrought cases: 7-1/4" x 2-9/16"; cross bar, oval seamless tubing: 13/16" x 1-3/8" x .065" thick; projection: 6".

**LATCH BOLT:** Cast bronze, hinged type, 3/4" throw.

**OUTSIDE OPERATION:** By thumb piece and pull handle when not locked by key. Key locks and unlocks the thumb piece.

**KEYING:** KD standard.

**FINISH:** US26D Dull chromium finish.



2923 Removable Mullion

8-1-99

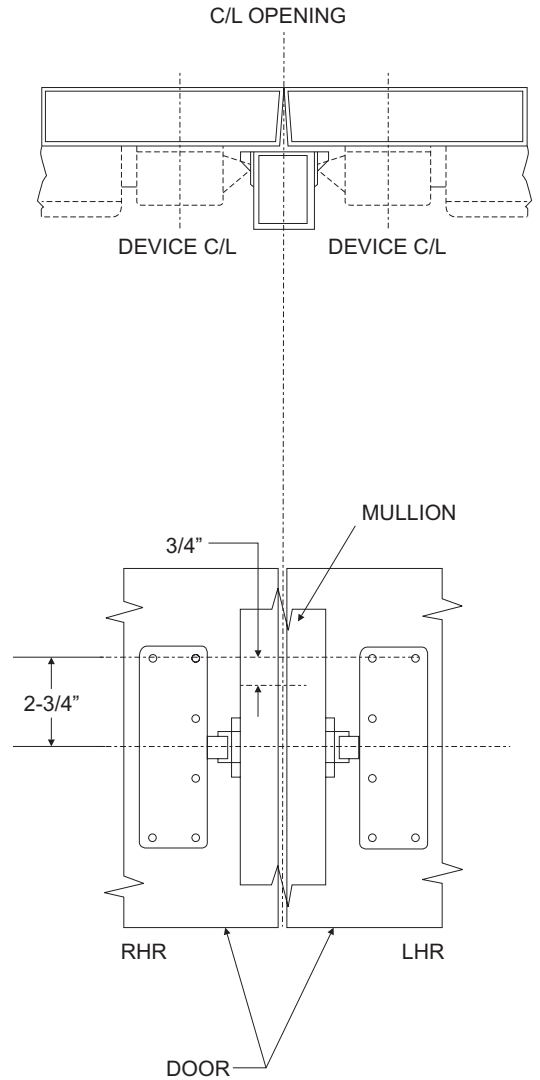
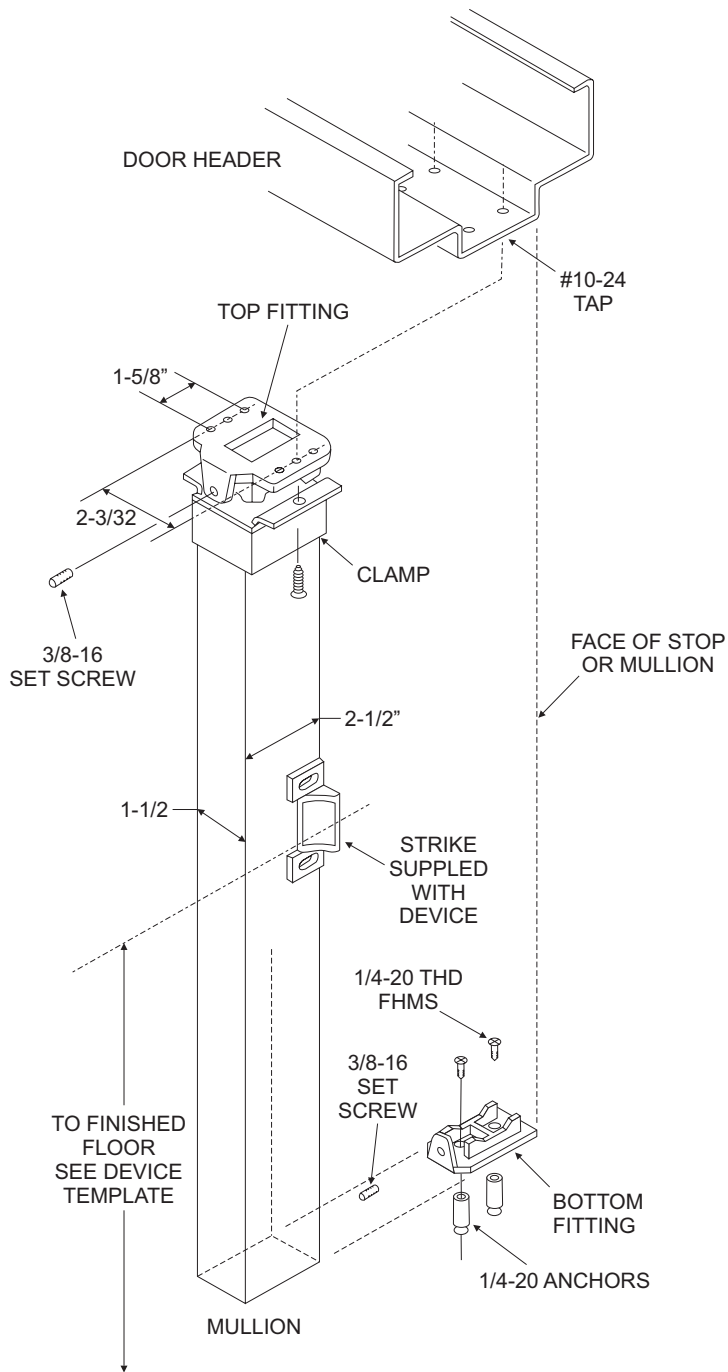


FIG. B

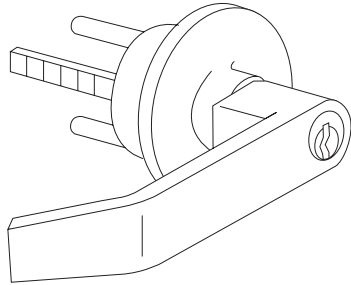
1. Install bottom fitting using anchors provided.
2. Prepare frame for top fitting.
3. Cut mullion to 1/8" clearance between mullion and top fitting flange (A: 3/4" less than total dimension between top fitting mounting surface and finished floor).
4. Slide top fitting into top of mullion; set mullion on bottom fitting; and secure top fitting to frame.
5. Install clamp.
6. Tighten set screws securely.
7. Install strikes to match exit device latches.



Parker UL520 Series Low Profile Rim Exit Device

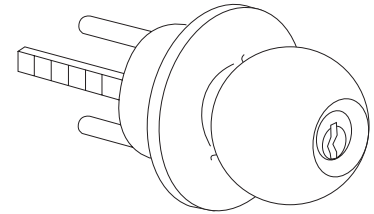
8-1-99

OUTSIDE TRIM

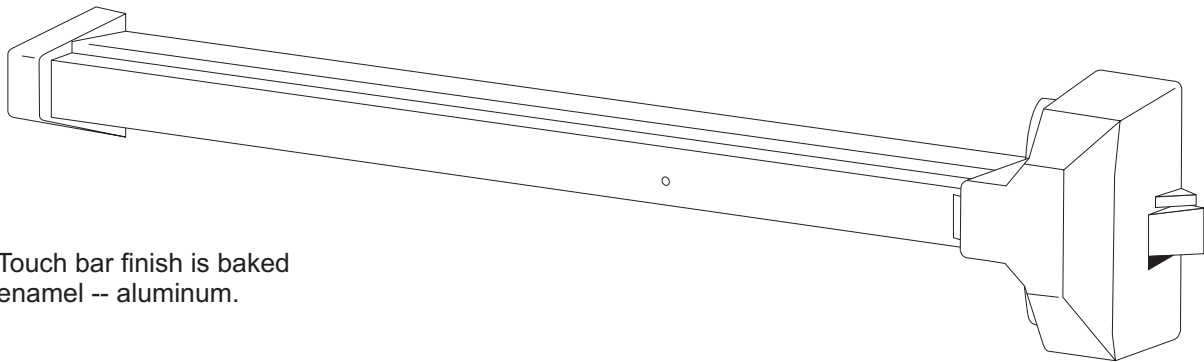


LEVER  
LL520/US26D

Cylinder locks or  
unlocks knob or lever.  
When unlocked, knob  
or lever retracts  
latchbolt.

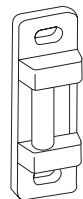


KNOB  
KL520/US26D



Touch bar finish is baked  
enamel -- aluminum.

Rim Strike: Standard; single door or  
pair of doors with mullion. Surface  
mounts to frame stop. No mortising.  
Supplied with two spacer plates.



SPECIFICATIONS:

Chassis Mount Construction: Operating  
mechanism assembled on single  
chassis which mounts on door; removal  
of case cover permits  
inspection/maintenance.

Easy Dogging: Half-turn of hex-dogging  
key locks flat bar in the depressed  
position; latchbolts and upper/lower  
latchbolts/deadbolts held retracted.

Door Thickness: 1-3/4" when used with  
operating trim.

Door Width: Flat bar length available for  
two standard door widths; doors 30">36"  
wide; doors 36">42" wide; flat bar easily  
field cut to specific width. Available for  
doors 42">48" wide on special order.

Material: Base and flat bar, steel;  
covers, high-density rust-resistant alloy.

Minimum Stile Width: 4-1/2"

UL Listed: Panic Hardware.

Reversible Design: Hand can be easily  
reversed in the field.

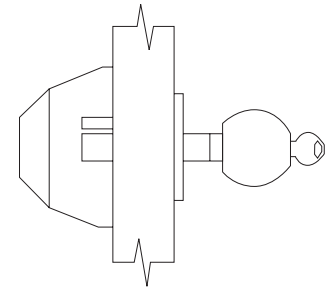


Low Profile Rim Type Anti-Panic Device

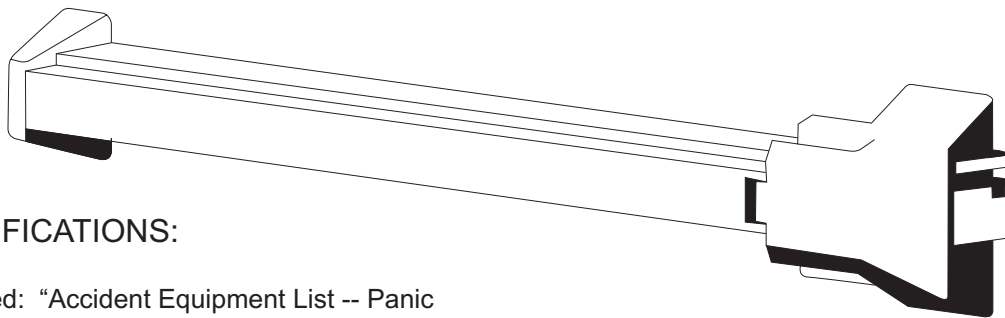
8-1-99

CROSSBAR SIZE GUIDELINES

Nominal Push Bar Width	Door Range
(26) 2'-6"	28" thru 30"
(30) 3'-0"	32" thru 36"
(36) 3'-6"	36" thru 42"
(40) 4'-0"	44" thru 48"



No. P87  
ENTRANCE and EXIT  
Outside By Key  
and Knob



SPECIFICATIONS:

UL Listed: "Accident Equipment List -- Panic Hardware

Inside Operation: A slight pressure on push bar will release the door to allow immediate exit

Dogging Device: Push bar may be dogged down with wrench provided to keep latch retracted for push/pull operation.

Material: Horizontal push bar of wrought steel channels. Latch bolts of sintered steel. Nylon bearings. Stainless steel springs.

Latch Bolt: 11/16" throw, Pullman type deadlocking latch.

Push Bar: Wrought steel channels may be cut down to fit various door widths; see chart above.

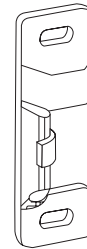
Strike: Surface applied.

Filler Plates: #S14629 (2-1/4" x 1-1/8", cylindrical lock front) and #14633 (ANSI 4-7/8" strike).

Finishes: SBL, Silver Aluminum Lacquer.

Pairs of Doors: M65 removable mullion is required.

OUTSIDE TRIM



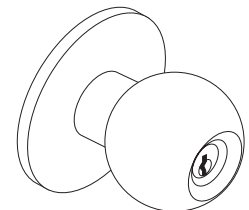
KNOB TRIM

Austin "A" Knob

Knob: 2-1/8" dia.

Rose: 2-7/8" dia.

US26D Satin Chrome Finish



Furnished with  
P87 function.

The above device is packaged for use with Gov. 161 lock preparation and ANSI 4-7/8" universal strike preparation. The center line of Gov. 161 lock preparation and the center line of push bar are the same height from the floor.

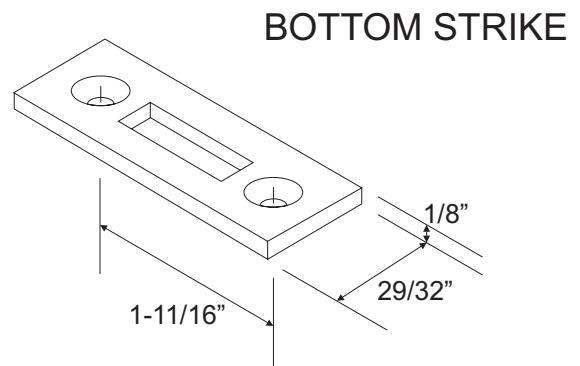
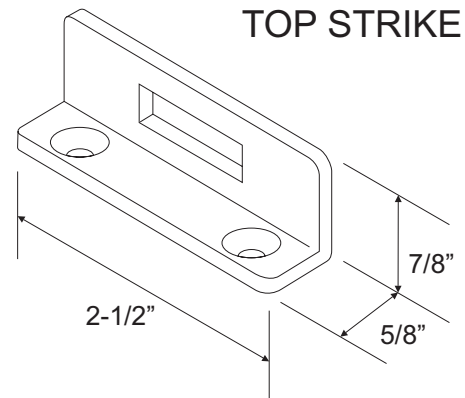
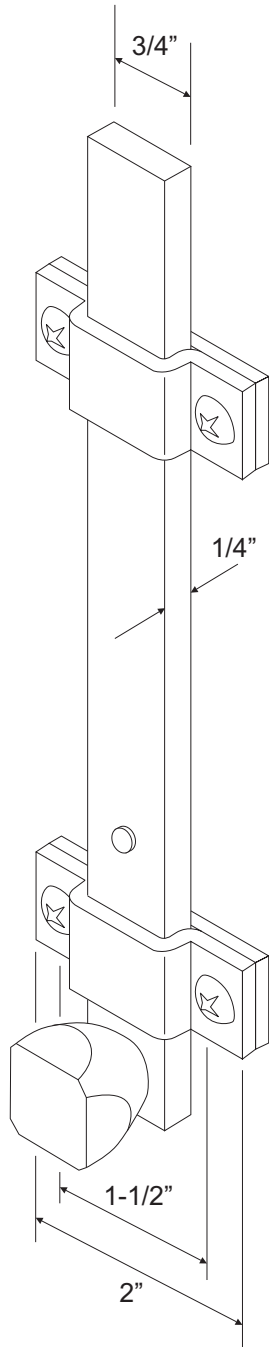


1708 Top & Bottom Surface Bolts For Double Doors

8-1-99

MATERIAL: STEEL  
FINISH: US2C  
UL LISTED  
BHMA L84161  
ANSI 156.16

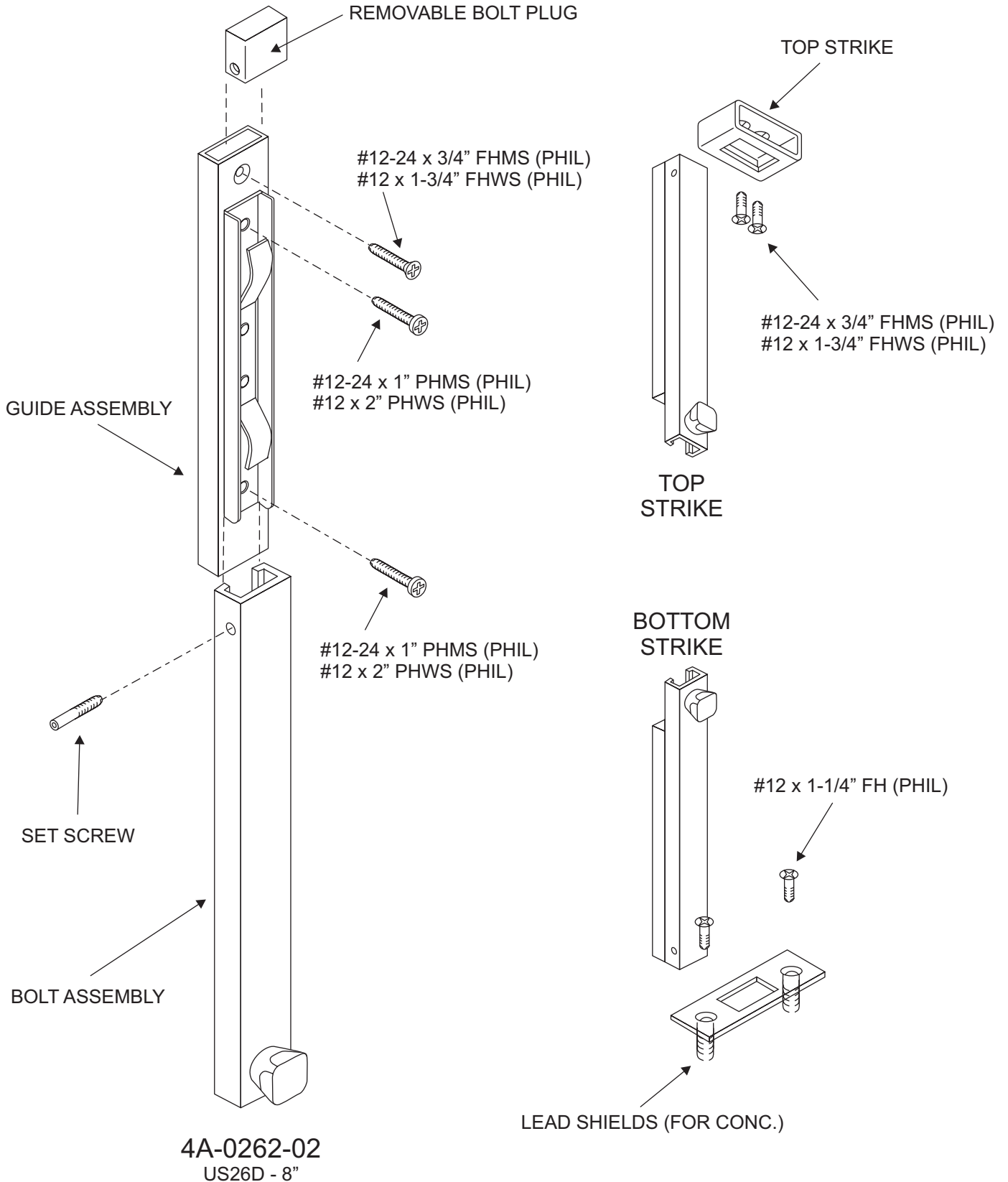
SCREW DETAILS	
BOLT:	(4) #12-24 X 1" PHMS (4) #12 X 1-1/4" FHWS
TOP and BOTTOM STRIKES	(2) #10 X 1-1/2" FHMS (2) #10 - 32 X 1-1/2" FHWS PLASTIC EXPANSION SHIELDS





Surface Bolts for Inactive Leaves of Double Doors

8-1-99

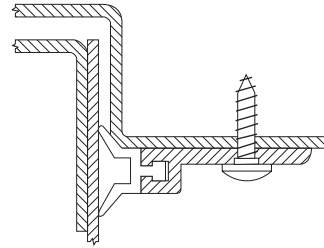




Bolt On Door Sweep w/ Saddle Threshold

8-1-99

194-A WEATHERSTRIP

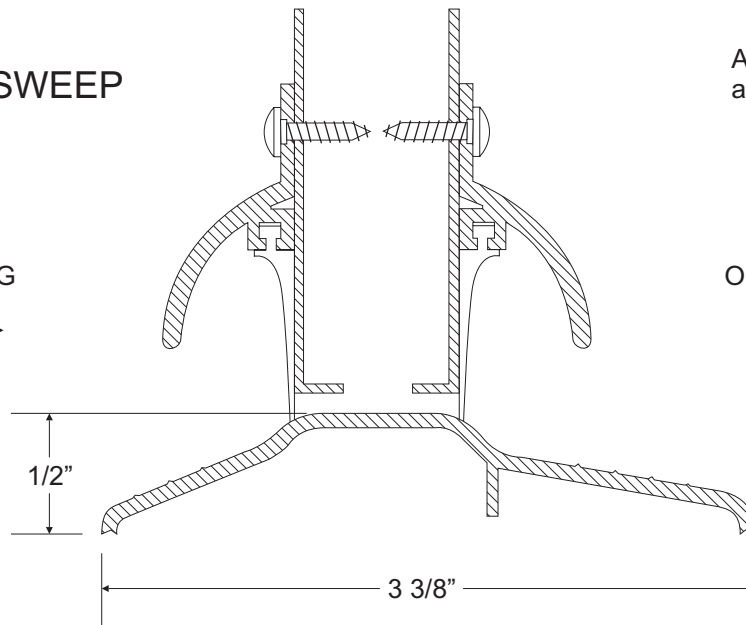


ALUMINUM  
and VINYL

154-AV ACTS AS AN EFFECTIVE RAINDRIP AND DOOR BOTTOM SEAL.

154-AV DOOR SWEEP

USE  
INSWING



ALUMINUM  
and VINYL

USE  
OUTSWING

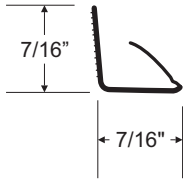


37A THRESHOLD  
ALUMINUM

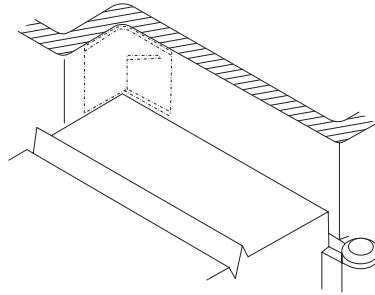


Adjustable Cap Style Sweep

8-1-99

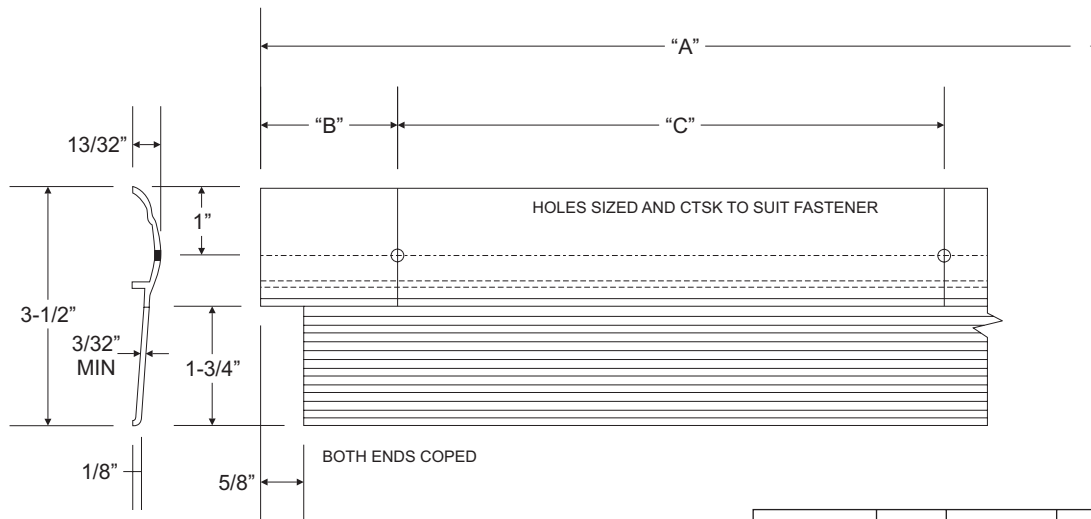


114PFPS Black, with pressure sensitive adhesive.



NOTE: 114PF strip may be reversed to provide wipe seal rather than compression seal as shown. The self-adhesive feature is for application between 50°F-100°F.

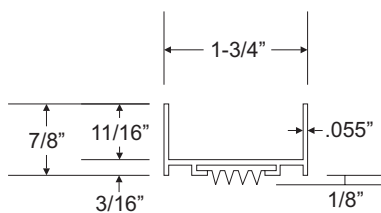
**WEATHERSTRIP**  
Polypropylene



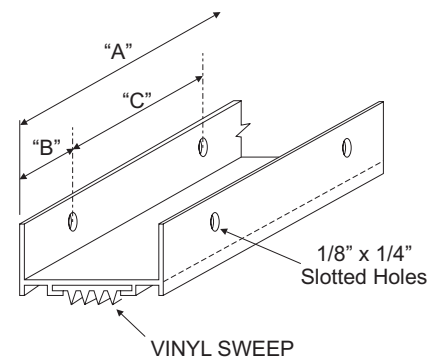
**THRESHOLD**  
Aluminum

PART NO	A	B	C	10x3/4"	10x2"	1/4x1/2 shield
99-410-00	36"	2"	8"	10	5	5
99-411-00	48"	3-17/32"	8-3/16"	12	6	6
99-412-00	72"	2-1/2"	8-3/8"	18	9	9

PART NO	A	B	C	6x3/8"
99-415-55	36"	1-1/2"	5-1/2"	14
99-416-00	48"	2"	5-1/2"	18



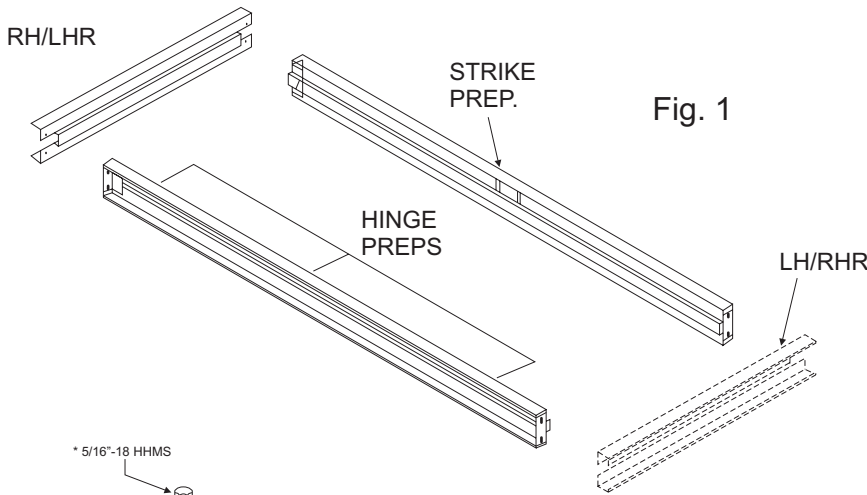
**DOOR BOTTOM**  
Aluminum/Vinyl





Reversible Door Frame Package Installation Guide

9-28-01



**A** Determine hand and swing. Then place frame head and jambs on flat surface (floor) with door hardware preparation side up. RH/LHR shown -- place head at opposite end (dotted) for LH/RHR, see Fig. 1. Fasten head to jambs with nuts and bolts provided. Check door opening carefully when tightening fasteners to insure that proper door opening is maintained, e.g., 3'-0" door needs a 36" opening, see Fig. 2.

**B** Verify hand and swing, then tilt the entire assembly up into place. Secure hinge jamb anchor to floor. Plumb hinge and strike jambs and level head.

**C** Anchor head and strike jamb to the building structure, the strike jamb to the floor, and the entire frame to the panel skins. For 6'-0" openings, install optional threshold anchor to the floor

**D** Install pre-notched threshold, Tap threshold onto jamb, from bottom, see Fig. 3.

**E** Install door in frame. Check for 1/8" clearance at head and 5/32" clearance at strike jamb, see Fig. 4

**F** Install lockset. Install weatherstrip (optional) at head first. If weatherstrip is applied type, adjust it so that gasket just contacts door when door is closed and latched. Do not force gasket against door as this will interfere with latching of lock, see Fig. 5.

Some installers prefer to reverse sequence of steps B and C

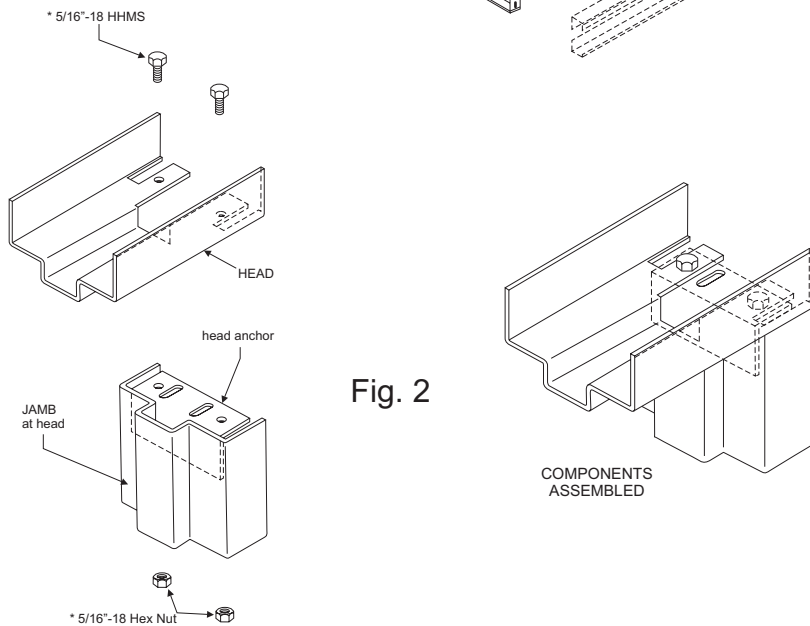


Fig. 2

COMPONENTS ASSEMBLED

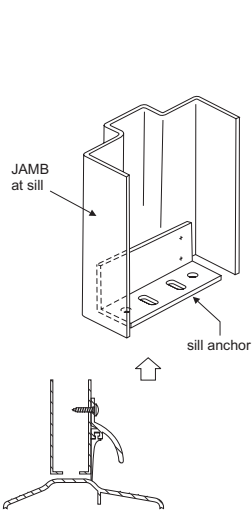


Fig. 3

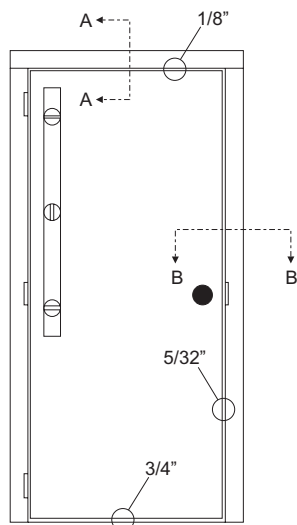


Fig. 4

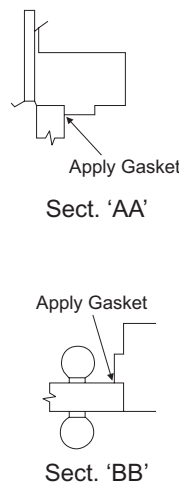


Fig. 5