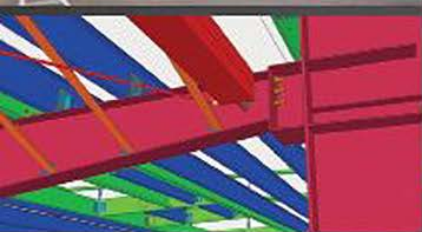
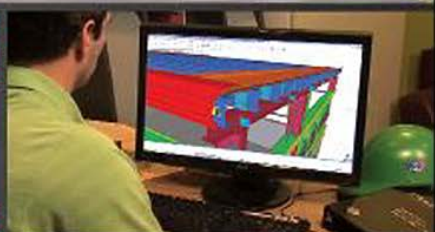
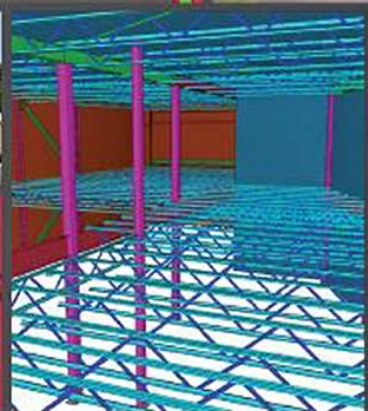


CBC STEEL BUILDINGS AND

BIM

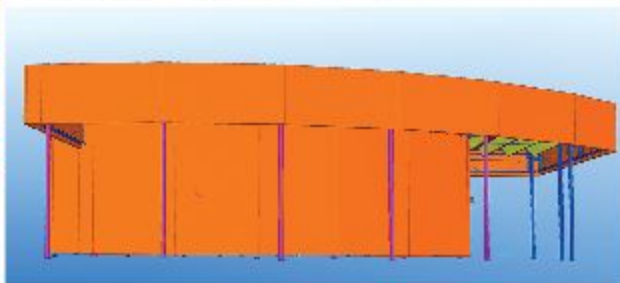
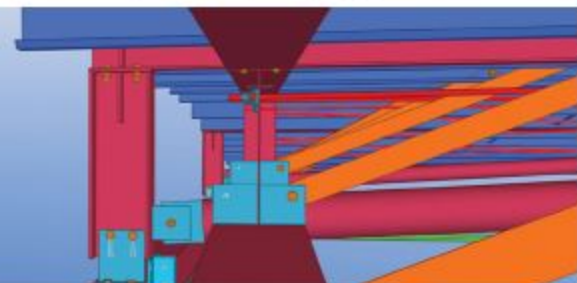
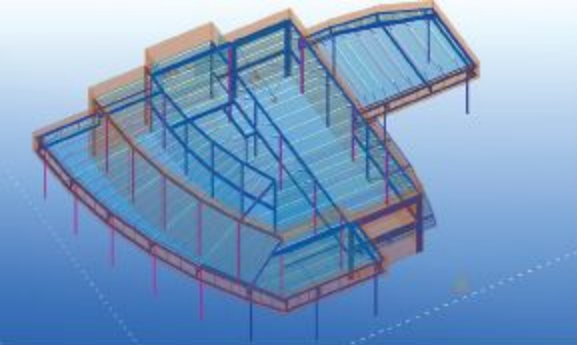
BUILDING INFORMATION MODELING



Transforming the Industry with
3D Digital Building Information Modeling



STEEL BUILDINGS
A Nucor Company



What is BIM?

Build Better with BIM

CBC Steel Buildings has paired its proven track record of quality and service with 3D digital modeling in order to give CBC Builders, general contractors, engineers and architects an edge over competitors in the market.

Building Information Modeling (BIM) uses three-dimensional software to more effectively design, detail, manufacture, and erect steel buildings. BIM generates and manages building data and its various components throughout the project's life cycle. This three dimensional, real-time, dynamic building modeling software increases productivity in building design and construction.

BIM encompasses geometry, spatial relationships, geographic information, quantities and properties of building components to construct a conceptual model of your building. The components of your building are then scaled to represent the dimensions of materials used to construct your project.

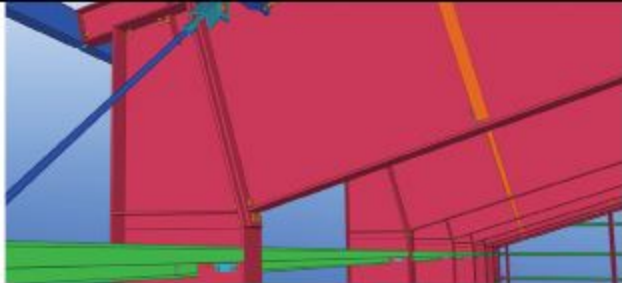
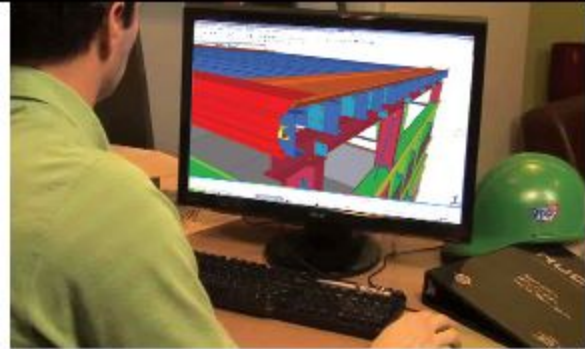


Your project information is stored in a digital database rather than a series of separate documents. That database serves as the central location for all characteristics of your project, as well as the master reference point anytime during the project.

Enhanced Visualization

BIM technology provides our customers with a modeling system that can display a conceptual replica of their building, which leads to confidence and peace of mind for the life cycle of the project.

This virtual model allows us to create certain projects digitally before building them in reality, thus reducing conflicts, saving time and money. In addition, we provide our customers a digital copy of their completed project model that can be used for decades of operation and maintenance.



BIM seamlessly bridges gaps in communication between Builders, contractors, architects, engineers and owners. Utilizing BIM with an Integrated Project Delivery System, or IPD, leverages the power of modeling to facilitate collaborative decision-making.

Collaboration & Interoperability

Tekla BIM Software

CBC Steel Buildings proudly partners with Tekla, a leading modeling software solutions provider. Utilizing the Tekla Structures program as a BIM software solution on selected projects ensures the interoperability of 3D with 2D systems.

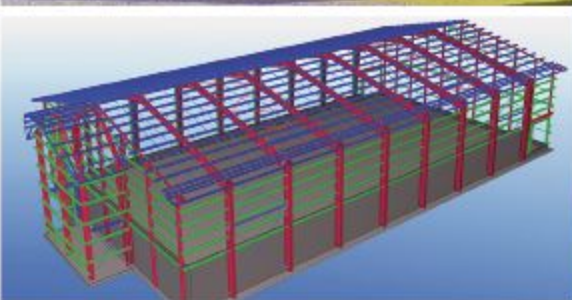
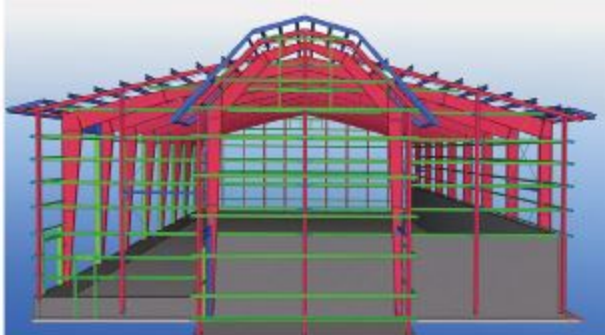
Tekla Structures makes it possible to share model and drawing information with IFC-compliant architectural modeling programs. Tekla Structures provides an accurate, detailed, intelligent and data-rich 3D building information modeling environment and creates open collaboration and interoperability and 3D building information models that can be utilized and shared by all building and construction disciplines.

Tekla BIMsight is a free software application for building information model-based project cooperation. With Tekla BIMsight everyone involved

with a project is able to view the BIM model at no charge. Enabled for Windows-based tablet devices, Tekla BIMsight is available for download from the website www.teklaBIMsight.com.

A unique SML link between Tekla Structures and Graphisoft® ArchiCAD®, allows architects and engineers to share and coordinate project information.

Tekla software supports legacy formats, such as DGN and DWG with an AutoCAD® drawing export, allowing engineers to create DWG files. The drawings can then be imported into the architectural drawing environment for production or referencing.



Why CBC Steel Buildings?

Leaders in Innovation

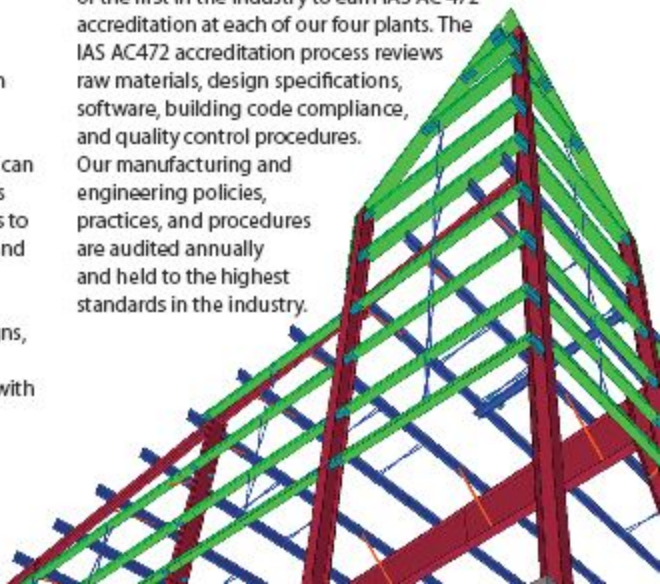
CBC Steel Buildings, a Nucor company, has been a leader in the design and manufacture of custom-engineered metal building systems for over three decades.

CBC offers competitively priced buildings that are delivered on time and fit together in the field, with unbeatable service and solutions that work.

Along with our family of Authorized Builders, CBC can provide exceptional building solutions for projects ranging from industrial and commercial structures to custom projects for the agricultural, community, and retail industries.

An American-owned company, CBC proudly designs, details, and fabricates each and every building in America, using American-made steel and crafted with American quality.

CBC Steel Buildings is a member of the MBMA (Metal Building Manufacturers Association) and CSSBI (Canadian Sheet Steel Building Institute), and was one of the first in the industry to earn IAS AC 472 accreditation at each of our four plants. The IAS AC472 accreditation process reviews raw materials, design specifications, software, building code compliance, and quality control procedures. Our manufacturing and engineering policies, practices, and procedures are audited annually and held to the highest standards in the industry.





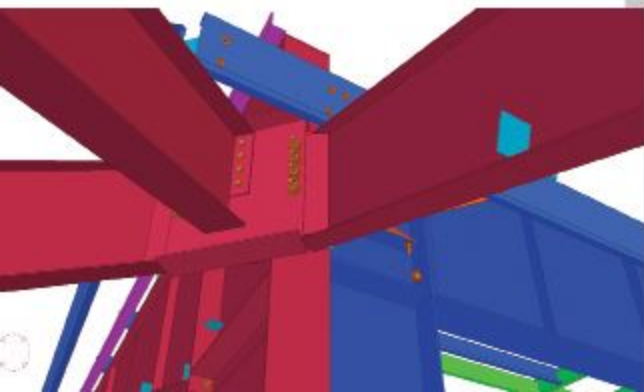
The Benefits of BIM with CBC

Solve Problems Before Breaking Ground

BIM technology can help you resolve potential problems during the design phase of your project. Visual representations of potential issues will enable you to identify clashes and conflicts between architectural, structural, and MEP systems. These design issues can be addressed and modified early in the process, saving you time and money.

BIM is the choice of leading CBC Builders, contractors, architects, fabricators, erectors, engineers, designers, manufacturers, and owners because it:

- Allows for easier coordination of various software and project personnel through Integrated Project Delivery (IPD) systems
- Serves as a significant resource for erectors
- Produces a working model that is usable for fabrication
- Leads to increased productivity
- Enables improved communication across project team members, which can significantly reduce change order costs
- Enhances quality control, including clash detection
- Provides comprehensive life-cycle management





STEEL BUILDINGS
A **NUCOR** Company

800.421.8076

1700 E. Louise Avenue, Lathrop, CA 95330

www.cbcsteelbuildings.com