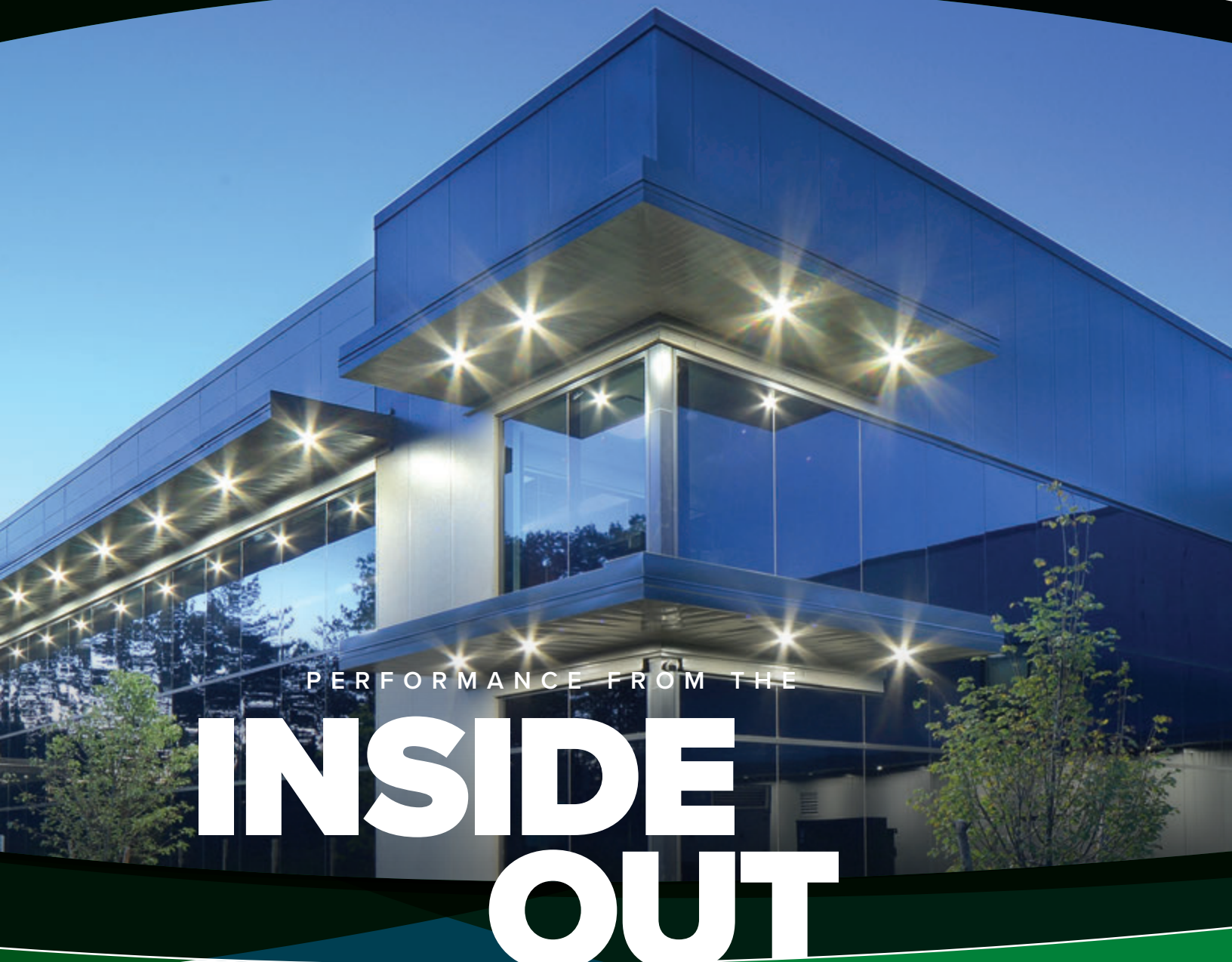


INSULATED METAL PANELS



PERFORMANCE FROM THE

INSIDE OUT

NUCOR®
BUILDINGS GROUP

**METL
SPAN®**
a NUCOR company



POWERFUL PARTNERSHIPS POWERFUL RESULTS

Nucor Buildings Group is one of North America's largest and most experienced manufacturers of custom metal building systems. We're constantly looking for ways to add value to make our Authorized Builders more competitive, including through strategic partnerships.

That's why we're pleased to welcome Metl-Span to the Nucor Buildings Group family. As a leading manufacturer of insulated metal panels, Metl-Span has gained a reputation for outstanding products and exceptional customer service. Metl-Span's comprehensive product line serves a broad range of markets, including the commercial, industrial, and manufacturing industries.

With the addition of the Metl-Span product line and Nucor Insulated Panel Group's rapidly expanding production capabilities, the Nucor Buildings Group brands are stronger and can serve you even better—delivering cost-effective, single-source solutions that give you a competitive edge.



THE NUCOR/METL-SPAN ADVANTAGE

As a Nucor customer, you now have access to our line of Metl-Span products. There are many benefits to using our insulated metal panels.

Simplification of the Building Process

Having a predictable single-source supplier for your primary materials streamlines the construction process, cutting out the middleman and eliminating needless delays.

Complete Production Control

By adding Metl-Span to the Nucor family, we have complete oversight of your building project's design and production. That ensures you will get what you need when you need it.

Shortened Lead Times

Our manufacturing process and nationwide network of production facilities allow for built-in efficiencies to make fabrication as quick as possible. Plus, with full control of our production schedule, we can offer shortened lead times by adapting our schedule to yours.

Products That Work With Each Other

Using products from many different suppliers on one project can create confusion or lead to conflicts and construction delays. Nucor and Metl-Span always work hand in hand, so compatibility is assured.

Nucor Quality from the Inside Out

With insulated metal panels coming from Nucor Buildings Group, you know you'll receive the same reliability and service you've come to expect from us. Our success depends on our tireless **FOCUS** on our customers.

FIT (Steel That Fits)

We have the best reputation in the industry for selling steel that fits. We strive to ensure that every job fits together in the field, with no back charges, back orders or shortages.

On Time

We are the industry leader in hitting our delivery commitments. Our customers' building crews can stay on schedule because our deliveries are on time.

Competitive Pricing

We are committed to saving our customers money with our advanced design systems offering flexibility, energy efficiency and speedy construction times.

Unbeatable Service

We are there for our customers when they need us.

Solutions That Work

Each one of our building systems is custom designed and fabricated to meet a customer's unique building needs. Our product is our customer's solution.

INDUSTRY LEADERS

NUCOR® BUILDINGS GROUP

Leading the industry in technology, design flexibility, quality, and value, Nucor Buildings Group is collectively one of the largest and most experienced manufacturers of custom engineered steel building systems. In addition to offering a full line of custom products, our insulated panels by Metl-Span deliver high-quality, durable and energy-efficient solutions designed for unparalleled performance to stand the test of time.



Metl-Span is a dynamic industry innovator dedicated to manufacturing and providing the highest quality insulated building panel products. Since their origination in 1968, Metl-Span has pioneered the research, design, production and sale of state-of-the-art insulated metal panels for institutional, commercial, and industrial buildings.



WHY INSULATED METAL PANELS (IMPs)

FEATURES & BENEFITS

Our insulated metal wall and roof panels are ideal for custom metal buildings, saving material and labor costs. Ideal for commercial and industrial buildings, other applications include schools, manufacturing facilities, distribution warehouses, community, recreation, aircraft hangars, and office buildings. Here are some of the advantages our insulated panels offer.

PERFORMANCE & DURABILITY

Our panels are comprised of an advanced insulation core that is injected between two pre-finished steel facings, forming a single, all-in-one unit. The result is the most thermally efficient panel available. Wall panels also have a specially formed side joint that permits the hidden application of sealant within recessed grooves, creating an impenetrable water and vapor seal that protects your building against extreme weather.

TIME

Metl-Span panels are pre-fabricated units, shipped to the jobsite ready-to-install in nearly all types of weather.

LABOR COSTS

Insulated metal panels are designed for easy and efficient installation to keep your project on schedule with concealed fastener system in the side joint. It allows quick installation, reducing construction time and getting closed in sooner.

IMPs reduce the amount of labor trades associated with conventional multi-component wall and roof assemblies. IMPs all-in-one construction provides all the necessary thermal, air, vapor and water barriers in a single product.

ENERGY EFFICIENCY

Each insulated metal panel contains an advanced urethane core that provides highly efficient insulation to drive down building energy usage and overall costs.

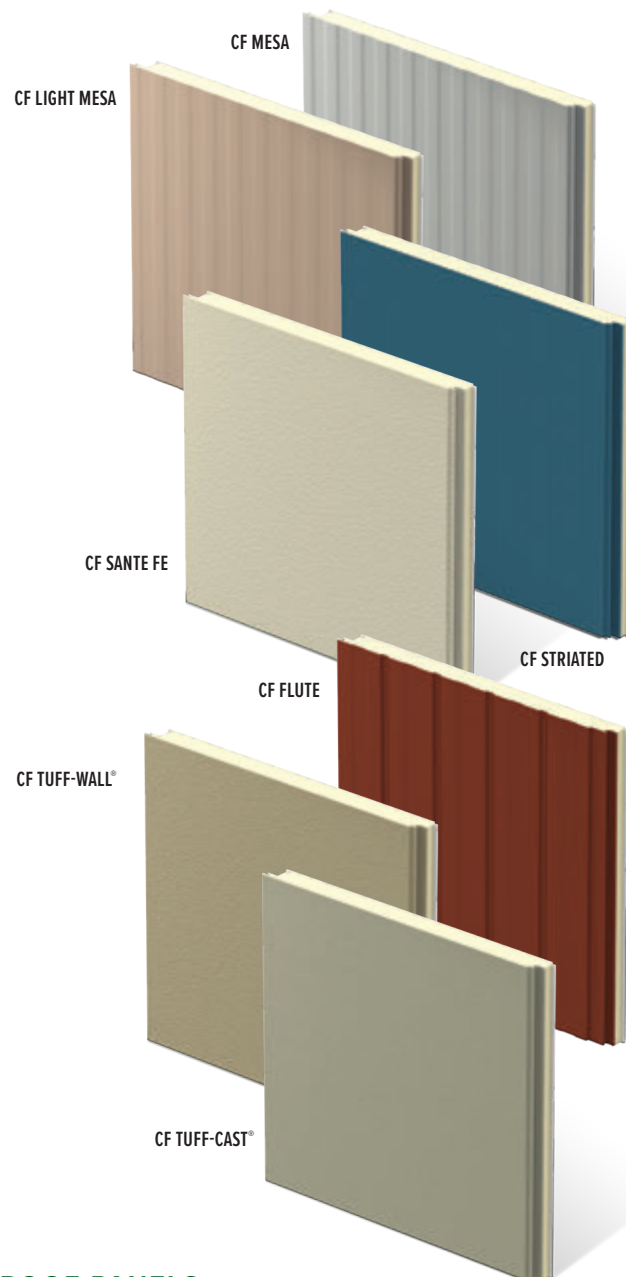
PRESENCE

We strive to offer production dates determined by customer needs, not manufacturer convenience. With manufacturing locations across the United States and Canada, Metl-Span offers faster service to our customers and reduced transportation costs.

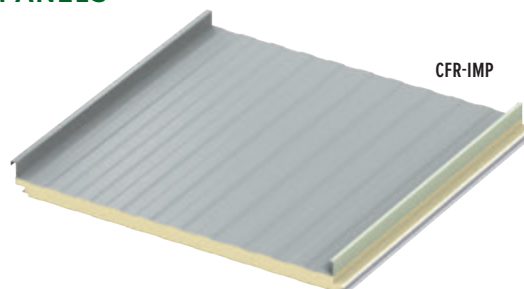
DESIGN FLEXIBILITY

Our panels are available in a variety of flat and corrugated surfaces suitable for exterior walls, interior walls and roofs. They come in multiple profiles that can be used in either horizontal or vertical designs with custom modular widths and corners. Rounding things out is the full range of colors, reveals, and detail accessories that can support or enhance any design.

WALL PANELS



ROOF PANELS



PERFORMANCE FROM THE INSIDE OUT

IMPs are the perfect solution when compared to traditional multi-component built-up systems.

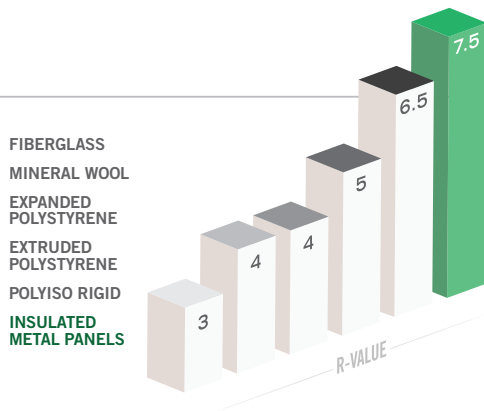


INSTALL ONE, BE DONE



METL-SPAN IMPs CAN BE
ERECTED AT A RATE OF UP TO
5,000 FT² PER 8-HOUR SHIFT
BY A FOUR-MAN CREW

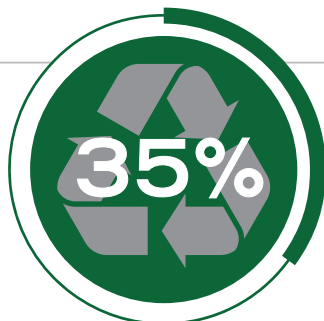
Dry-in your building in record speed and let interior work begin. A single word that captures the essence of Metl-Span IMPs is “efficient,” especially as it applies to installation. Two key installation efficiencies are gained with Metl-Span IMPs – vastly reduced labor and trades. These reductions make Metl-Span IMPs perfect for fast-track construction which translates into significant direct cost savings as well as indirect cost savings from accelerated scheduling.



METL-SPAN IMPs ACHIEVE
GREATER INSULATION R-VALUES
PER INCH THAN BRICK VENEER WALL SYSTEMS

UNMATCHED EFFICIENCY

Metl-Span IMPs provide outstanding long-term air, thermal, water, and vapor control in a single, simple, yet brilliantly engineered panel suitable for any climate. In fact, Metl-Span IMPs are so effective, they are also widely utilized as roofs where performance is even more critical. With robust insulating values up to a staggering R-52.5, Metl-Span IMPs easily meet energy codes for every North American climate zone.



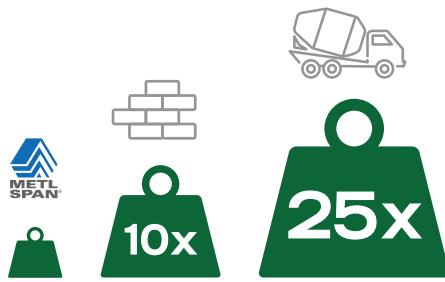
MORE THAN 35% OF
METL-SPAN IMP STEEL IS
MADE FROM RECYCLED STEEL

ENVIRONMENTALLY RESPONSIBLE

Steel is arguably the most recycled material on the planet. More than 35% of Metl-Span IMP steel is made from recycled steel and 88% of scrap steel from panel manufacture is recycled. PUR-insulated cores produce no ozone-depleting gas and help make buildings highly energy efficient, reducing reliance on fossil fuels. Metl-Span IMPs have a lower embodied carbon footprint than concrete and mineral wool. Plus, the high R-values of Metl-Span IMPs contribute toward Leadership in Energy and Environmental Design (LEED) green building credits.



LIGHTEN UP



METL-SPAN IMPs ARE AT LEAST
10-25X LIGHTER/FT²
THAN BRICK & PRECAST/TILT-UP CONCRETE

Great things happen when a building design sheds weight by replacing heavy brick, precast, or tilt up concrete with extraordinarily strong but lightweight Metl-Span IMPs. Footings and structural supports are dramatically decreased. Costs are vastly reduced. And life safety – for both construction workers and building occupants – is significantly enhanced.

RESILIENT BY NATURE



METL-SPAN IMPs
WITHSTAND NATURAL DISASTERS
THAT OTHER MATERIALS CAN'T

Floods, hurricanes, earthquakes, and fires: Metl-Span IMPs are uniquely capable of withstanding natural disasters that other materials cannot. The panels are made entirely from waterproof materials. Strong dual steel skins protect people and property from airborne debris. The lightweight panels are engineered to accommodate building movement, keeping panels in place during seismic events. Plus, Metl-Span IMP systems pass NFPA 285-2019 and are available with non-combustible mineral wool insulation to provide one- to three-hour fire ratings.

FLEXIBLE BY DESIGN



6,000+ UNIQUE PANEL
POSSIBILITIES

WITH METL-SPAN IMPs, ONLY
YOUR IMAGINATION IS THE LIMIT

Metl-Span IMPs are manufactured for a wide variety of markets to maximize their aesthetic and function. Today, Metal-Span delivers wall and roof IMPs for architectural, commercial, industrial, cold storage, and clean room applications. Metl-Span IMPs integrate seamlessly with windows and other building envelope components and materials. Compared to other cladding options, Metl-Span IMPs come in a huge range of shapes, textures, colors, and finishes.

OUR PANELS

Due to their excellent insulating and weatherproofing characteristics, as well as their very competitive installation cost, Metl-Span panels are ideally suited for use as walls, ceilings and roofs for commercial, industrial and institutional buildings of virtually any scale, in both new and retrofit construction.



	U-FACTOR (BTU/h-ft²·°F)		U-FACTOR (BTU/h-ft²·°F)	
	PANEL WIDTH: 42"		PANEL WIDTH: 42"	
		35°		35°
	2"	0.059	2"	0.059
	2.5"	0.046	2.5"	0.046
	3"	0.039	3"	0.039
	4"	0.029	4"	0.029
	5"	0.023	5"	0.023
	6"	0.019	6"	0.019
	8"	0.014	8"	0.014
	R-VALUE (h-ft²·°F/BTU)		R-VALUE (h-ft²·°F/BTU)	
	PANEL WIDTH: 42"		PANEL WIDTH: 42"	
		35°		35°
	2"	17.5	2"	17.5
	2.5"	21.9	2.5"	21.9
	3"	26.2	3"	26.2
	4"	35.0	4"	35.0
	5"	43.7	5"	43.7
	6"	52.5	6"	52.5
	8"	70.0	8"	70.0

WALL PANELS

CF MESA ◻



The CF Mesa panel is well suited for exterior and interior walls and ceiling applications. The lightly corrugated profile on both faces creates symmetry while the minor rib provides a flattened appearance.

PANEL SPECIFICATIONS

Width: 30"±, 36", 42"

Thickness: 2", 2½", 3", 4", 5", 6", 8"

Length: NON-DIRECTIONAL EMBOSSED
8'-0" to 32'-0" Horizontal
8'-0" to 52'-0" Vertical
UNEMBOSSED
8'-0" to 16'-0" Horizontal
8'-0" to 40'-0" Vertical

Exterior Profile: Longitudinal planks spaced at nominal 4" on center, nominal ⅛" deep, embossed or unembossed

Exterior Face: G-90 galvanized or AZ-50 aluminum-zinc coated steel in 26, 24 and **22 Ga.

Interior Profile: Mesa, nominal ⅛" deep or Light Mesa, nominal ⅙" deep, embossed or unembossed

Interior Face: G-90 galvanized or AZ-50 aluminum-zinc coated steel in 26, 24 and **22 Ga.

Joint: Offset double tongue-and-groove with extended metal shelf for positive face fastening

CF LIGHT MESA ◻ •



This shallower version of our Mesa profile is ideal for commercial, institutional and industrial applications.

PANEL SPECIFICATIONS

Width: 30", 36", 42"

Thickness: 2", 2½", 3", 4", 5"+, 6"+, 8"+

Length: NON-DIRECTIONAL EMBOSSED
8'-0" to 32'-0" Horizontal
8'-0" to 52'-0" Vertical
UNEMBOSSED
8'-0" to 16'-0" Horizontal
8'-0" to 40'-0" Vertical

Exterior Profile: Lightly profiled ⅙" deep, longitudinal planks spaced at nominal 4" on center, embossed or unembossed

Exterior Face: G-90 galvanized or AZ-50 aluminum-zinc coated steel in 26, 24 and 22 Ga.

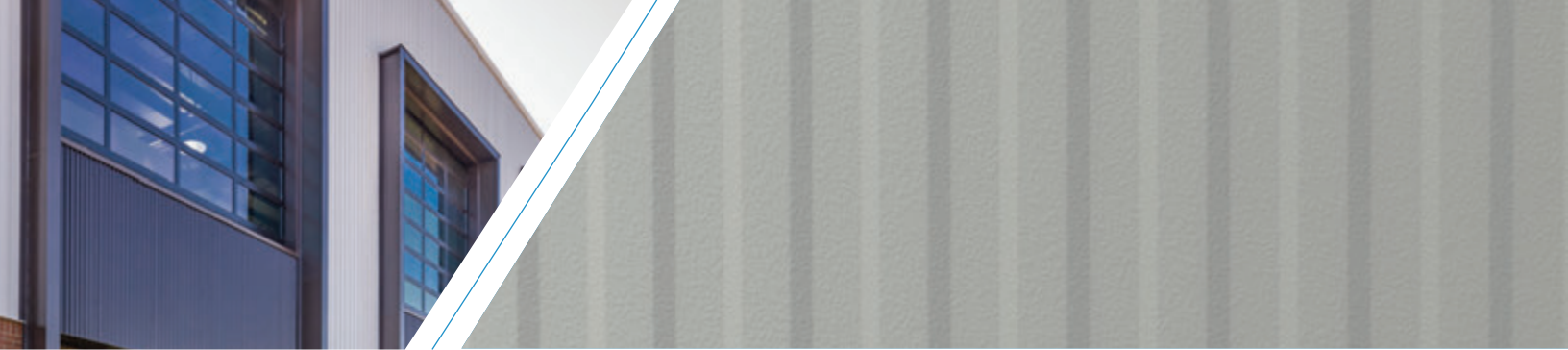
Interior Profile: Light Mesa, nominal ⅙" deep, embossed or unembossed

Interior Face: G-90 galvanized or AZ-50 aluminum-zinc coated steel in 26, 24 and 22 Ga.

Joint: Offset double tongue-and-groove with extended metal shelf for positive face fastening

◻Contact us for reveal options. •Endfolds, factory pre-formed corners and trimless ends available. ±Center-to-center corrugation spacing, may vary by manufacturing location.

**Not available in unembossed. + Not available as an exterior application. Contact us for custom length availability.



U-FACTOR (BTU/h-ft²·°F)

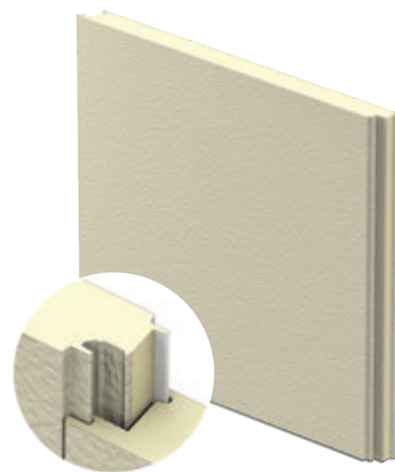
PANEL WIDTH: 42"

	35°
2"	0.059
2.5"	0.046
3"	0.039
4"	0.029

R-VALUE (h-ft²·°F/BTU)

PANEL WIDTH: 42"

	35°
2"	17.5
2.5"	21.9
3"	26.2
4"	35.0



U-FACTOR (BTU/h-ft²·°F)

PANEL WIDTH: 42"

	35°
2"	0.059
2.5"	0.046
3"	0.038
4"	0.028

R-VALUE (h-ft²·°F/BTU)

PANEL WIDTH: 42"

	35°
2"	17.5
2.5"	21.9
3"	26.2
4"	35.0

CF STRIATED ▣ •



The CF Striated panel's exterior face is lightly profiled with narrow longitudinal striations, which create a subtle shadow effect but exhibit a virtually flat appearance from a short distance away.

PANEL SPECIFICATIONS

Width: 24"*, 30", 36", 42"

Thickness: 2", 2½", 2¾"*, 3", 4"

Length: NON-DIRECTIONAL EMBOSSED
8'-0" to 32'-0" Horizontal
8'-0" to 40'-0" for 24", 30", 36" Vertical
8'-0" to 32'-0" for 42" Vertical
UNEMBOSSED
8'-0" to 16'-0" Horizontal
8'-0" to 16'-0" Vertical

Exterior Profile: Longitudinal striations, nominal 1/32" deep, embossed or unembossed

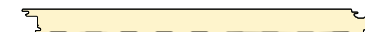
Exterior Face: G-90 galvanized or AZ-50 aluminum-zinc coated steel in 24 and 22 Ga.

Interior Profile: Light Mesa, nominal 1/16" deep, embossed or unembossed

Interior Face: G-90 galvanized or AZ-50 aluminum-zinc coated steel in 26, 24 and 22 Ga.

Joint: Offset double tongue-and-groove with extended metal shelf for positive face fastening

CF SANTA FE ▣ •



The CF Santa Fe panel has a flat exterior profile with a heavy, embossed stucco texture that mimics the look of a masonry finish.

PANEL SPECIFICATIONS

Width: 24"*, 30"*, 36", 42"

Thickness: 2", 2½", 2¾"*, 3", 4"

Length: 8'-0" to 32'-0" Horizontal
8'-0" to 40'-0" Vertical

Exterior Profile: Flat profile with heavy embossing simulates a desert southwestern appearance

Exterior Face: G-90 galvanized or AZ-50 aluminum-zinc coated steel in 24 and 22 Ga.

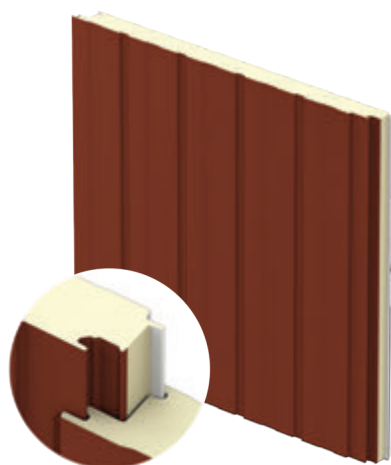
Interior Profile: Light Mesa, nominal 1/16" deep, embossed or unembossed

Interior Face: G-90 galvanized or AZ-50 aluminum-zinc coated steel in 26, 24 and 22 Ga.

Joint: Offset double tongue-and-groove with extended metal shelf for positive face fastening

Reveal: Up to 1" reveal options in ¼", ½", ¾" and 1" increments

*Contact us for reveal options. •Endfolds, factory pre-formed corners and trimless ends available. ±Center-to-center corrugation spacing, may vary by manufacturing location.
*Available only from Nevada plant **Not available in unembossed. + Not available as an exterior application. Contact us for custom length availability.

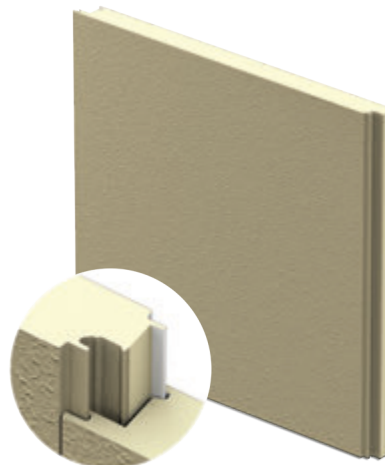


U-FACTOR (BTU/h-ft²·°F)
PANEL WIDTH: 42"

	35°
2"	0.060
2.5"	0.047
3"	0.039
4"	0.029
5"	0.023
6"	0.020
8"	0.015

R-VALUE (h-ft²·°F/BTU)
PANEL WIDTH: 42"

	35°
2"	17.5
2.5"	21.9
3"	26.2
4"	35.0
5"	43.7
6"	52.5
8"	70.0



U-FACTOR (BTU/h-ft²·°F)*
PANEL WIDTH: 42"

	35°
2"	0.059
2.5"	0.046
3"	0.038
4"	0.028
5"	0.023
6"	0.019

R-VALUE (h-ft²·°F/BTU)*
PANEL WIDTH: 42"

	35°
2"	17.5
2.5"	21.9
3"	26.2
4"	35.0
5"	43.7
6"	52.5

TUFF COTE® WALL PANELS

CF FLUTE



The CF Flute panel features a ribbed profile that provides bold vertical reveals complementary to any temperature-controlled building.

PANEL SPECIFICATIONS

Width: 42"

Thickness: 2", 2½", 2¾", 3", 4", 5", 6", 8"

Length: NON-DIRECTIONAL EMBOSSED
8'-0" to 32'-0" Horizontal
8'-0" to 52'-0" Vertical

Exterior Profile: 1" wide, nominal ⅜" deep, longitudinal reveals at 8.4" on center, embossed

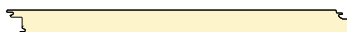
Exterior Face: G-90 galvanized or AZ-50 aluminum-zinc coated steel in 26, 24 and 22 Ga. Not available in unembossed

Interior Profile: Mesa, nominal ⅛" deep or Light Mesa, nominal ⅛" deep, embossed or unembossed

Interior Face: G-90 galvanized or AZ-50 aluminum-zinc coated steel in 26, 24 and 22 Ga.

Joint: Offset double tongue-and-groove with extended metal shelf for positive face fastening

CF TUFF WALL® ▣ •



The CF Tuff Wall is an attractive, stucco-like panel. Its hard aggregated, fiber-reinforced polymer coating offers a durable, impact and abrasion-resistant coating that withstands severe weather conditions.

PANEL SPECIFICATIONS

Width: 36", 42"

Thickness: 2", 2½", 3", 4", 5", 6"

Length: 8'-0" to 40'-0"

Exterior Profile: 2", 2½", 3" and 4" are no profile with Tuff Cote® finish system; 5" and 6" are Mesa nominal ⅛" deep with Tuff Cote® finish system

Exterior Face: Stucco-embossed, G-90 galvanized and/or AZ-50 aluminum-zinc coated steel in 24 and 22 Ga. with factory-applied Tuff Cote® finish system .

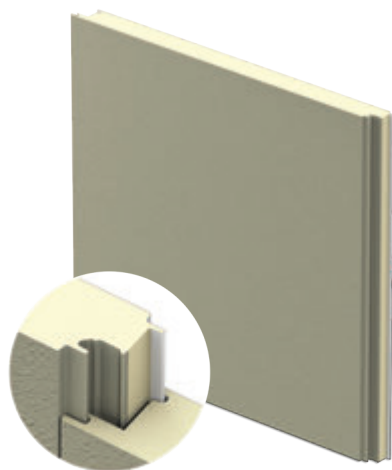
Interior Profile: Light Mesa nominal 1/16" deep

Interior Face: Stucco-embossed, G-90 galvanized and/or AZ-50 aluminum-zinc coated steel in 26, 24 and 22 Ga.

Joint: Offset double tongue-and-groove with extended metal shelf for positive face fastening

Exterior Texture: Tuff Cote® finish system—a hard aggregated fiber-reinforced polymer coating

° Contact us for reveal options. | • Endfolds, factory pre-formed corners and trimless ends available. | ± Center-to-center corrugation spacing, may vary by manufacturing location. | * Available only from Nevada plant. | ** Not available in unembossed. | + Not available as an exterior application. | ♦ Based on ASTM C518, ASTM C1363 and thermal modeling +5" and 6" CF Tuff-Cast and Tuff Wall available with Mesa, nominal 1/8" deep profile only | Contact us for custom length availability.



U-FACTOR (BTU/h-ft²·°F)*

PANEL WIDTH: 42"

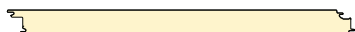
	35°
2"	0.059
2.5"	0.046
3"	0.038
4"	0.028
5"	0.023
6"	0.019

R-VALUE (h-ft²·°F/BTU)

PANEL WIDTH: 42"

	35°
2"	17.5
2.5"	21.9
3"	26.2
4"	35.0
5"	43.7
6"	52.5

CF TUFF-CAST™ ▣ ●



The CF Tuff-Cast panel mimics the look of finished precast concrete. Its hard aggregated, fiber-reinforced polymer coating offers a durable, impact and abrasion-resistant coating that withstands severe weather conditions.

PANEL SPECIFICATIONS

Width: 36", 42"

Thickness: 2", 2 1/2", 3", 4", 5", 6"

Length: 8'-0" to 32'-0" for Horizontal
8'-0" to 40'-0" for Vertical

Exterior Profile: Factory applied Tuff Cote® system textured finish similar to precast concrete

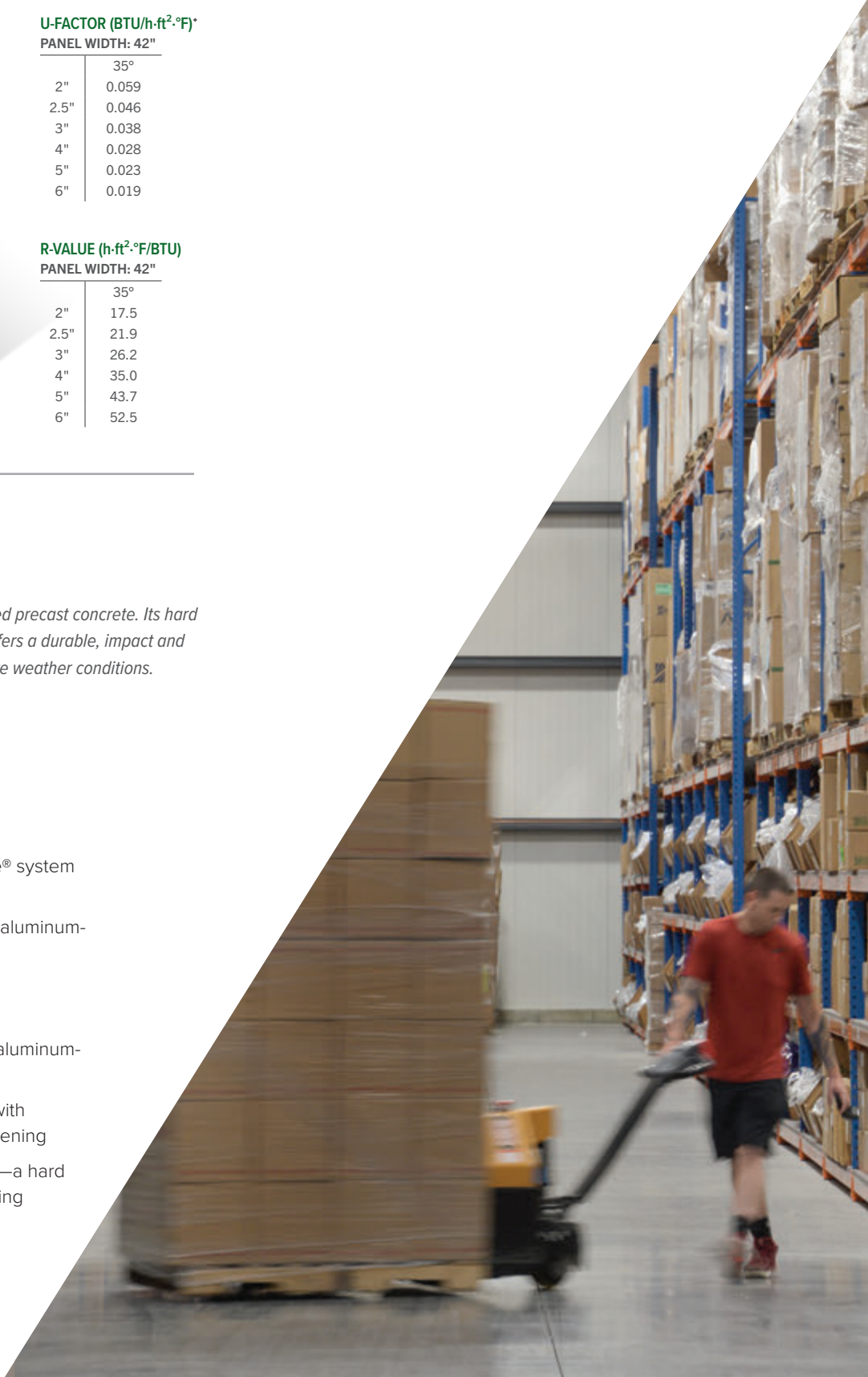
Exterior Face: G-90 galvanized or AZ-50 aluminum-zinc coated steel in 24 and 22 Ga.

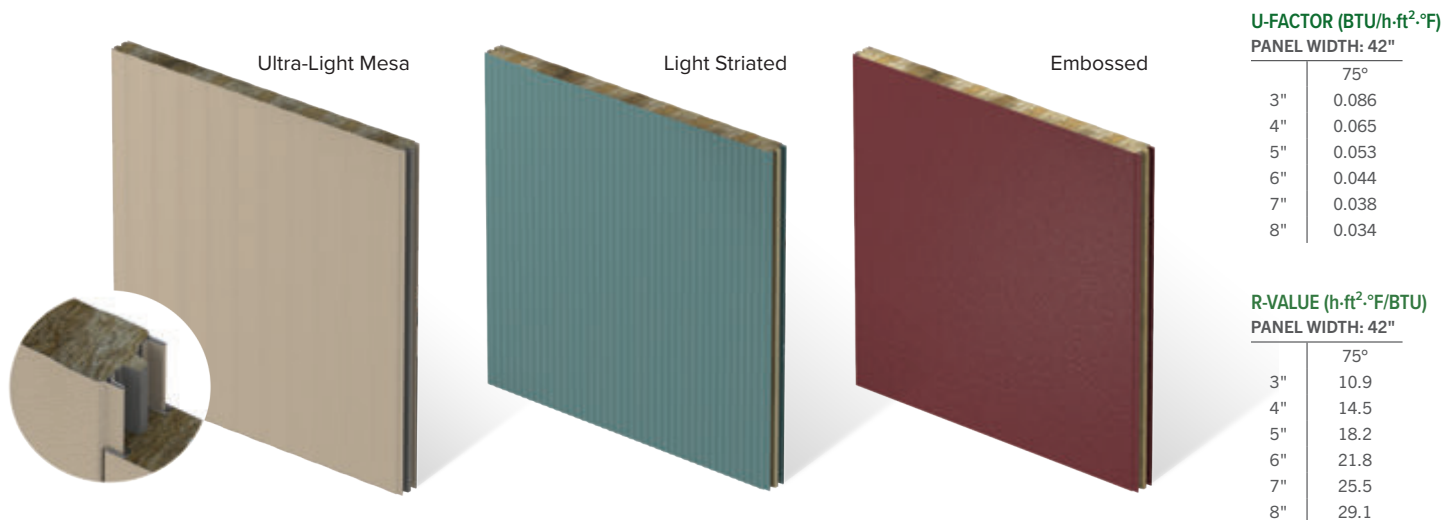
Interior Profile: Light Mesa, nominal 1/16" deep, embossed or unembossed

Interior Face: G-90 galvanized or AZ-50 aluminum-zinc coated steel in 26, 24 and 22 Ga.

Joint: Offset double tongue-and-groove with extended metal shelf for positive face fastening

Exterior Texture: Tuff Cote® finish system—a hard aggregated fiber-reinforced polymer coating





FIRE RESISTANCE

THERMSAFE® & THERMSAFE NON-EXPOSED FASTENER (NEF)



ThermalSafe is the panel of choice with a fire-resistant interlocking side joint, achieving a one-, two- or three-hour fire rating for walls and 1.5 hours for ceilings. ThermalSafe is available with three profiles: Ultra-Light Mesa, Light Striated or Santa Fe for the desired look for temperature-controlled buildings.

PANEL SPECIFICATIONS

Width: 42", 43"~

Thickness: Nominal 3", 4", 5", 6", 7", 8"

Length: NON-DIRECTIONAL EMBOSSED
8'-0" to 40'-0" variable by thickness;
contact us for exact maximum lengths

Exterior Profile: Ultra-Light Mesa, Santa Fe or Striated, nominal 1/32" deep, embossed

Exterior Face: G-90 galvanized or AZ-50 aluminum-zinc coated steel in 26 and 24 Ga.

Interior Profile: Ultra-Light Mesa, nominal 1/32" deep, embossed

Interior Face: G-90 galvanized or AZ-50 aluminum-zinc coated steel in 26 and 24 Ga.

Weight, 26 Ga.: 3" is 3.94 PSF, 4" is 4.65 PSF, 5" is 5.49 PSF, 6" is 6.21 PSF, 7" is 6.92 PSF, 8" is 7.63 PSF

Joint: Exclusive LockGuard® side joint has a flush, double tongue-and-groove connection of the metal faces with an advanced integral spline to join the mineral wool core

Core: Non-combustible, rigid mineral wool lamellas. Mineral wool fibers are oriented perpendicular to the panel faces for maximum structural strength.

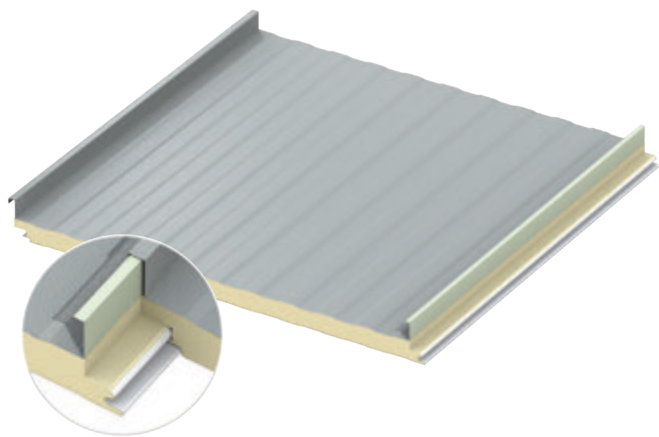
Thermal Values: K-Factor** @ 75° F (24° C) is 0.275

R-Value: The core insulating properties are 3.61 "R" per inch

Fastening: Available with either through-fastening across the width of the panel to the support framing or non-exposed fastening (NEF) by securing through the back of the panel for a flush visual appearance.

Consult fire-resistant listings for fastener types and spacing. Fastening patterns may vary depending on specific windload and fire-resistant requirements.

*Available only from Nevada plant. †No hourly rating available. **K-Factor calculations: Btu in/ft2hr. °F. »Ultra-Light Mesa & Light Striated only. ~Ultra-Light Mesa only.



U-FACTOR (BTU/h·ft²·°F)

PANEL WIDTH: 42"

	35°
2"	0.065
2.5"	0.052
3"	0.044
4"	0.033
5"	0.027
6"	0.022

R-VALUE (h·ft²·°F/BTU)

PANEL WIDTH: 42"

	35°
2"	17.5
2.5"	21.9
3"	26.2
4"	35.0
5"	43.7
6"	52.2

ROOF

CFR-IMP



The CFR-IMP roof panel provides an unsurpassed weathertight seal and service life. Ideal for commercial, industrial and institutional markets, the panel can be used on roof slopes as low as ½": 12".

PANEL SPECIFICATIONS

Width: 30", 36", 42"

Thickness: 2", 2½", 3", 4", 5", 6"

Length: NON-DIRECTIONAL EMBOSSED
9'-6" to 53'-0"

Exterior Profile: 2" high standing seam with a Mesa profile between the seams, embossed

Exterior Face: G-90 galvanized or AZ-50 aluminum-zinc coated steel in 24 and 22 Ga.; or AZ-55 aluminum-zinc coated steel with a clear acrylic coating in 24 Ga.

Interior Profile: Mesa, nominal ⅛" deep, embossed/unembossed

Interior Face: G-90 galvanized or AZ-50 aluminum-zinc coated steel in 26, 24 and 22 Ga.

Joint: Concealed clip mechanically seamed singlelock standing seam at the exterior side joint. The interior side joint is a single tongue-and-groove interlock.

Uplift Performance: UL 90 rated, FM Approvals Standard 4471, and Florida Building Code approved. Dade County NOA.

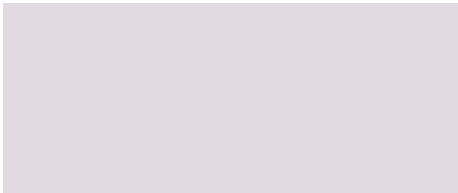
**K-Factor calculations: Btu in/ft²hr. °F.
Contact us for custom length availability.

STANDARD COLORS & COATINGS

All Metl-Span colors are formulated to provide premium energy efficient solar reflectivity.



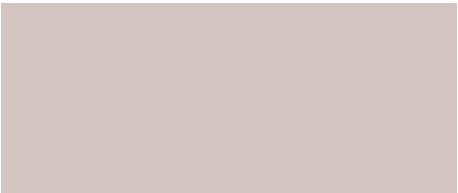
PVDF COLORS



Regal White IR .67 SRI 81



Reflective White * IR .59 SRI 70



Warm White IR .59 SRI 70



Pearl Gray * IR .45 SRI 51



Desert Sand * IR .52 SRI 60



Surrey Beige IR .46 SRI 52



Slate Gray IR .35 SRI 38



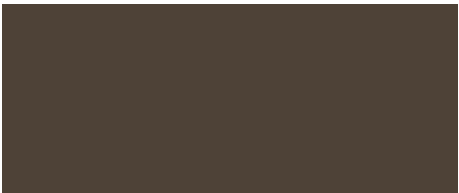
Royal Blue IR .26 SRI 25



Terra Cotta IR .31 SRI 32



Cypress Green IR .26 SRI 25



Dark Bronze IR .27 SRI 27

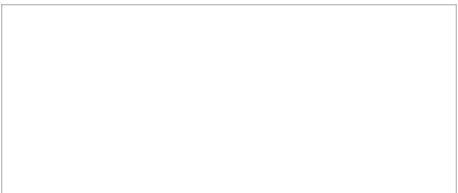


Charcoal * IR .30 SRI 31



Galvalume * IR .77 SRI 72

NOTE: When using field-applied coatings, always order Imperial White Polyester for the exterior coating. Colors shown closely approximate actual coating colors.



Igloo White (Interior)



SP COLORS



Polar White

IR .60 SRI 71



Sandstone

IR .54 SRI 63



Fox Gray

IR .46 SRI 52



Sagebrush Tan

IR .46 SRI 52



Brick Red

IR .31 SRI 31



Aztec Blue

IR .29 SRI 29

TUFF COTE® EXTERIOR COLORS

Tuff Cote® Fiber-Reinforced Polymer Coating – for Tuff Wall® or Tuff-Cast™ Panels only



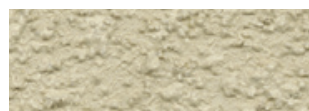
Textured White

E: 0.86 SRI: 77



Warm Limestone

E: 0.87 SRI: 51



Light Stone

E: 0.84 SRI: 56



Medium Beige

E: 0.88 SRI: 40



Surrey Beige[■]

E: 0.88 SRI: 34



Antique Bronze

E: 0.87 SRI: 24



Light Gray

E: 0.87 SRI: 36

Non-Stock Color: Extended lead times may apply. [■]Surrey Beige PVDF does not match the Surrey Beige Tuff Cote® color offering ^{}Available only for CFR-IMP panel. The Galvalume coating process is likely to result in variances in spangle (size, number, and reflection) from coil to coil which may result in noticeable shade variations. Galvalume is also subject to variable weathering and may appear to have different shades due to weathering characteristics. These shade variations are not cause for rejection. The term "TBK" on the Order Document refers to "To Be Selected" from standard colors as shown on this chart. Please note that PVDF is a slight upcharge over SP.



NUCOR[®]
BUILDINGS GROUP