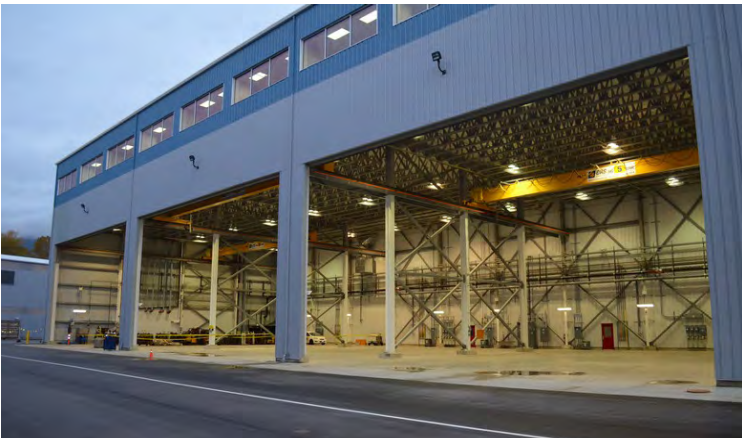


Seaspan Vancouver Shipyards Shop, Offices & Paint Blast Shop

CBC
STEEL BUILDINGS
A NUCOR Company
www.cbcsteelbuildings.com



LOCATION

North Vancouver BC, Canada

SIZE

74,000 sf

WALL SYSTEM

Standard R-Panel

ROOF SYSTEM

MS 24 Standing Seam

These two buildings combined are 74,000 square-feet. The shop and office building is 95'2" x 603'8" x 15'3" and consists of large shop space on the ground floor and a full second floor used for offices, lunch rooms and washroom/shower facilities. The building is a conventional braced frame steel structure with a clear span pre-engineered steel structure on top. The conventional portion is 95'-0" wide x 590'-0" long. It has a full second floor at 46'-0" high. It has 7 transverse crane bays that house 5 to 15 ton bridge cranes. The pre-engineered structure is a single slope building with a high eave of 71'-0" and supports 13 large HVAC units.

The paint blast shop is a pre-engineered steel building and is a large single slope lean-to-attached to the shop and office building. It is 120'-0" wide, 135'-0" long x 48'-0" high. It has three large fabric doors up to 100' wide by 40' high.