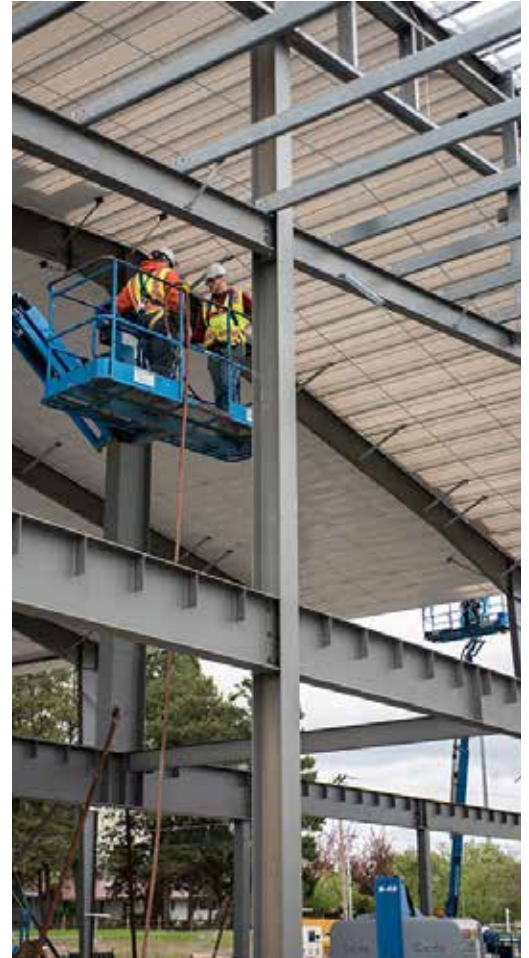


Peterson Machinery Industrial Complex



LOCATION
Hillsboro, Oregon

SIZE
214,000 sf

WALL SYSTEM
Product Type

ROOF SYSTEM
MS-24 Standing Seam

BUILDING END-USE
Industrial Complex

Peterson Machinery services, maintains, and sells Caterpillar heavy industrial equipment throughout the Pacific Northwest. To relocate and expand their growing operations, the company built a six-building industrial equipment complex. Steel buildings were the obvious choice, offering large structural bays needed to accommodate equipment, while maintaining the structural capabilities needed to support many cranes. A total of 27 bridge cranes were used without the need for additional structures — allowing for long distance travel and providing easier and safer workflows throughout the complex. The buildings consist of a 106,000 sf main building that serves as a showroom, retail sales, office space, and includes a parts warehouse. A 32,000 sf hydraulic shop is used for machine work, including welding, fabrication, and engine testing and calibrations. A 7,200 sf accessory building includes a paint booth, sandblast booth, and track shop. The campus also includes a 12,000 sf rental building which stores all Cat rental store fleet and includes a shop space and rental center. The wash rack building has open walls and includes a drying pad. And finally, the SITECH building, which includes a GPS integrator shop, offices, and a showroom to display and sell the equipment. Extra care was taken to reduce their environmental impact, and several sustainable features were integrated into the project.