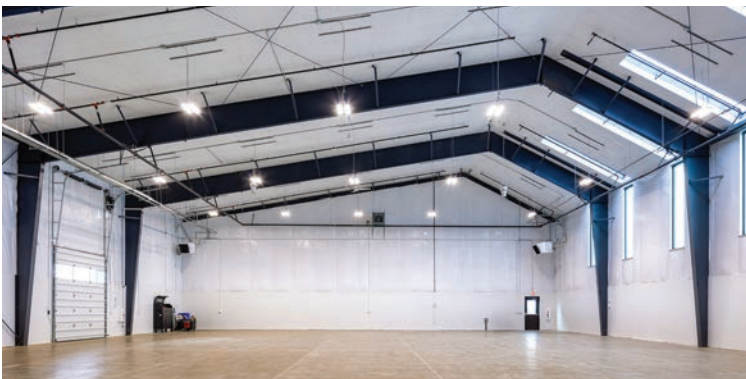


HD Fowler

CBC
STEEL BUILDINGS
a **NUCOR** brand



LOCATION
Medford, OR

SIZE
14,480 sf

BUILDING END-USE
Commercial Warehouse & Retail

The HD Fowler facility in Medford, OR is a 14,480 sf commercial retail and warehouse building defined by its distinctive asymmetrical gable framing, which creates a bold look while supporting efficient retail operations and warehouse functionality. This framing approach establishes unique structural lines that set the building apart visually.

Exterior wall and roof systems allow the final finish to align with the client's aesthetic direction. At the front of the building, a dynamic alcove supported by tube spandrel beams replaces the standard canopy approach, offering functional coverage while adding an architectural element that complements the structure's asymmetrical form.